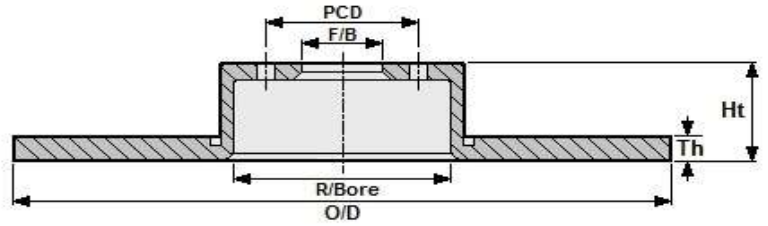
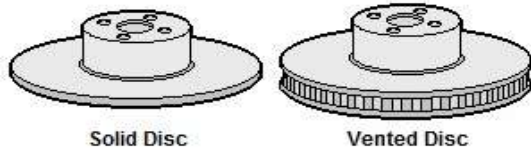


BLACK DIAMOND PERFORMANCE: Brake Discs Dimensions/Weights

Note: Size chart is for reference & comparison only. * Some discs may have been removed from current range.



Part Number	Vehicle Make	Type	O/D	Th	Min	Ht	F/Bore	R/Bore	Stud	Loc	PCD	KGs
KBD 001	Alfa Romeo, Fiat, Lancia, Yugo	F/R-S	240	11	9.2	39.5	59	123	4	2	98	7.16
KBD 003	Ford, Westfield	F/R-S	240	10	9	58	63.5	136	4	1	108	7.44
KBD 004	Opel, Vauxhall	F-S	236	12.7	11.5	41	60	120	4	3	100	7.78
KBD 005	Opel, Vauxhall	F-S	236	10	7	41	60	123	4	3	100	6.62
KBD 007	AC, Ford, Hyundai	F-S	245	12.7	11.4	27	68	115	4	0	92.1	8.06
KBD 008	Audi, Volkswagen, Seat	F/R-S	239	10	9	39	65	125	4	1	100	6.58
KBD 009	Citroen, Peugeot	F-S	247	10	9	34	66	133	4	2	108	6.76
KBD 011	Reliant, Rover Group	F-S	240	12.8	11.5	43	66	122	4	2	95	8.36
KBD 014	Ford	F-S	239	10	8	43	63.5	136	4	1	108	6.86
KBD 018	Rover Group	F-V	213	20.8	19	70.5	55.5	85	4	0	73	7.74
KBD 019	Rover Group	F-V	240	22	21.2	43	66	122	4	2	95.25	9.08
KBD 021	Audi, Seat, Volkswagen	F-S	239	12	10	35	65	125	4	1	100	7.38
KBD 022	Citroen, Peugeot	F-S	265	10	9	27	66	134	4	2	108	7.46
KBD 023	Dacia, Renault	F-S	238	12	11	41	61	129	4	2	100	6.96
KBD 024	Ford	F-S	245	12.7	11.7	27	68	116	4	0	92.1	8.04
KBD 026	Ford, TVR	F-V	260	24	23	53	63.5	137	5	0	112	12.4
KBD 027	Honda, Rover Group	F-S	238	12.7	11.7	47.2	61	123	4	4	100	8
KBD 028	Audi	F-V	276	25	23	46	68	135	5	0	112	
KBD 029	Ford	F-S	254	14.5	13.5	31.5	78	83	5	0	100	10.22
KBD 032	Dacia Renault	F-S	228	10	9	38	83	104	6	0	98.7	5.94
KBD 033	Honda, Rover Group	F-S	231	12.5	11.5	44	61	125	4	4	100	7.12
KBD 034	Renault	F-S	238	8	7	41	61	129	4	2	100	5.96
KBD 036	Audi	F-S	257	13	11	46	68	132	4	0	108	9.34
KBD 039	Honda, Rover Group	F-V	262	21	19	47	64	141	4	4	100	10.42
KBD 042	LDV, Rover Group	F-S	276	14.3	13.3	53	82	125	5	0	104.8	12.42
KBD 045	Ford, TVR	F-S	262	12.7	11.6	73	69	116	5	0	95	11.6
KBD 048	Volvo	F-V	263	22	20.4	68	68	140	5	2	108	11.14
KBD 050	Rover Group, Innocenti	F-S	213	9.5	8.5	61	56	85	4	0	73	6.3
KBD 052	Ford	F-V	283	24	22.5	55	63.5	137	4	0	108	13.62
KBD 053	Toyota	F-V	238	18	17	49	54	127	4	2	100	8.28
KBD 057	Opel, Vauxhall	F-V	258	24	22	58.5	70	139	5	1	110	11.1
KBD 059	Honda, Rover Group	F-V	231	17	15	44	61	124	4	4	100	7.18
KBD 061	Honda, Rover Group	F-V	262	21	20	51	64	141	4	4	114.3	11.26
KBD 062	MG	F-S	273.5	8.7	7.6	45	73	123	4	0	95.5	8.38
KBD 066	Alpina, BMW	F-V	284	22	20.4	76	79	146	5	1	120	12.3
KBD 070	Citroen	R-S	224	7	6.3	56.5	71	132	4	2	108	5.24
KBD 071	Volvo	R-S	281	9.5	8.4	73.5	68	156	5	4	108	9.72
KBD 072	Ford	R-S	253	10	8.9	33	63.5	155	5	0	112	7.22
KBD 073	Mercedes LCV	F-S	279	16	15	78	88	135	5	5	112	14.1
KBD 074	Alfa Romeo, Fiat, Lancia	F-V	257	20	18.2	40	59	126	4	4	98	10.12
KBD 075	Mercedes	F-S	278	12.6	10.6	64	80	128	5	5	112	10.84
KBD 076	Alfa Romeo, Lancia	F-V	284	22	20.2	43.5	59	127	4	2	98	11.96
KBD 077	Mercedes	F-S	262	11	9	45.5	67	142	5	3	112	8.3
KBD 078	Mercedes	F-V	284	22	19.4	44	67	154	5	3	112	12.58
KBD 079	Mercedes	R-S	258	9	7.3	53.5	67	158	5	2	112	6.8
KBD 082	Renault, Vauxhall	F-V	252.5	24	22	53.5	76	143	6	0	95	10.7
KBD 085	Renault	F-V	259	20	18	46	61	130	4	2	100	10.32
KBD 086	Volvo	F-V	262	22	20	72.3	46	60	5	1	108	15.86
KBD 087	Volvo	F-V	262	22	20	56	68	139	5	5	108	11.2
KBD 090	Volvo	F-V	287	22	20	56	68	143	5	5	108	13.78
KBD 092	Honda, Rover Group	F-V	282	21	19	51	64	141	4	4	114.3	12.44
KBD 093	Daewoo, Opel, Vauxhall	F-V	236	20	17	41	60	123	4	3	100	8
KBD 095	Suzuki, Vauxhall	F-S	215	10	9	33	86	105	4	0	102	5.6
KBD 097	Aston Martin, Jaguar	F-V	284	24	23.2	60	82.5	136	5	0	111	14.58
KBD 098	Jaguar	R-S	264	12.7	11.4	25.5	70	130	4	2	95.25	9.28
KBD 099	Jaguar	F-V	295	22	21	66.5	80	154	5	1	120.65	14.28
KBD 100	BMW	F-S	260	12.6	11.1	35	66	136	4	1	100	9.04
KBD 101	BMW	F-S	284	12	10.4	76	79	146	5	2	120	11.38

KBD 106	BMW	F-S	255	12.6	11.6	75	63	126	4	1	100	10.38
KBD 108	Audi	R-S	245	10	8	59.5	68	135	4	0	108	7.74
KBD 110	Audi	F-V	257	22	20	46.5	68	132	4	0	108	10.28
KBD 112	Land Rover	F-S	298	14	13	70	102	160	5	0	127	14.14
KBD 113	Honda, Rover Group	R-S	260	10	8	43	64	159	4	4	114	7.66
KBD 115	Renault	F-V	244	20.5	17.7	31.5	61	127	4	2	100	
KBD 116	Renault	F-V	265	20	17.7	31.5	61	127	4	2	100	11.2
KBD 117	Austin-Healey, MG	F-S	209.5	7.8	7	60	64	80	4	0	81	5.54
KBD 120	Alfa Romeo, Fiat, Lancia,	F-S	257	12	10.2	40.5	59	123	4	2	98	9.02
KBD 121	Citroen, Peugeot	F-V	266	20.4	18.5	27	66	133	4	2	108	9.88
KBD 124	Mitsubishi	F-V	242	18	16.4	34	86	125	4	0	104	8.04
KBD 129	Citroen, Peugeot	F-S	238	8	6	29	57	124	3	1	98	5.28
KBD 132	Citroen, Fiat, Peugeot, Talbot	F-S	256	16	13.5	64	73	142	5	5	118	12.26
KBD 133	BMW	R-S	258	10	8.4	60	62	161	4	1	100	8.22
KBD 134	Opel, Vauxhall	R-S	270	10	8	67	66	157	5	2	110	9.36
KBD 138	Opel, Vauxhall	R-S	261	10	8	82	40	52	4	1	100	12.6
KBD 139	Opel, Vauxhall	R-S	270	10	8.5	77	57	160	4	3	100	9.92
KBD 140	Nissan	F-S	240	12	11	45	61	126	4	2	100	8.26
KBD 141	Nissan	F-V	240	18	16	46	61	126	4	2	100	8.94
KBD 143	Saab	F-S	280	12.7	11.7	66	86	145	4	2	114.3	11.22
KBD 144	Alpina, BMW	F-V	282	25	23.5	76	79	146	5	1	120	13.32
KBD 146	Alpina, BMW	R-S	284	10	8.4	61	75	180	5	2	120	9.52
KBD 148	Citroen	F-V	260	20	18	54	58	129	5	2	98	10.94
KBD 149	MCW, Volkswagen	F-S	281	20	18	81	91	129	5	0	115	18.42
KBD 150	Porsche	F-V	282.5	20.5	19.1	35	107	145	5	0	126	10.6
KBD 151	Porsche	F-S	257	13	11.5	84	40	52	4	0	108	11.82
KBD 152	Ford	R-S	273	10.3	8.9	33	63.5	155	4	0	108	8.1
KBD 155	BMW	F-S	302	11.8	10.4	76	79	149	5	2	120	13.86
KBD 157	Skoda	F-S	236	12.6	10.5	45.5	62	125	4	1	98	7.68
KBD 158	Skoda	F-S	252	9	8	54	80	122	4	0	98	7.44
KBD 164	Autobianchi, Fiat, Innocenti, Land	F-S	240	12	10.8	47	59	128	4	2	98	7.74
KBD 165	Seat, Fiat, FSO, Lancia	F-S	227.5	11	9.5	46	62	118	4	2	98	6.72
KBD 168	Honda	F-V	242	19	17	50	61	126	4	4	100	9.08
KBD 170	Honda	F-V	242	19	17	45	61	126	4	4	100	8.68
KBD 173	Renault	F-V	279	22	20.8	58	61	132	5	2	108	13.34
KBD 174	Fiat	F-V	240	20	18.2	47	59	125	4	4	98	9.04
KBD 178	Volkswagen	F-S	278	13	11	119	45	68	5	0	112	18.4
KBD 179	Volkswagen	F-S	258	16	14	95	45	68	5	1	112	16.5
KBD 180	Volvo	F-S	259	12	10.5	40	61	127	4	3	100	8.82
KBD 181	Citroen, Fiat, Peugeot, Talbot	F-S	256	13	11.8	61	72	142	5	5	118	10.06
KBD 182	Citroen, Fiat, Peugeot, Talbot	F-S	290	16	14.8	61	73	141	5	5	118	15.4
KBD 184	Citroen, Peugeot	F-V	275	22	20	48	71	130	5	2	108	12.02
KBD 186	Lada	F-S	239	12	10.8	42.5	58.5	126	4	2	98	7.66
KBD 187	LDV, Freight Rover	F-V	275	24	22	63	82.5	126	5	0	104.8	14.04
KBD 188	Nissan	F-S	214	12	11	46	61	126	4	0	100	6.12
KBD 193	Daewoo, Lotus, Opel, Vauxhall	F-V	256	24	22	41	60	120	4	3	100	10.62
KBD 194	Land Rover	F-V	298	24	22	70.2	101.7	157.5	5	0	127	17.54
KBD 197	Land Rover	R-S	290	12.7	11.6	62	101.7	161	5	5	127	14.44
KBD 206	Opel, Vauxhall, Saab	R-S	260	10	8	69	65.5	160	5	3	110	8.88
KBD 207	Ford	F-V	278	24	22	36	63.5	137	4	0	108	12.08
KBD 209	Isuzu, Opel, Vauxhall	F-V	257	22	20.6	35	88	89	6	0	109	11.4
KBD 210	BMW	F-S	286	12	10.4	51	79	148	5	1	120	11
KBD 213	Ford	F-V	260	24	23	53	63.5	137	4	0	108	12.44
KBD 214	Daihatsu	F-V	234	18	17	47	56	128	4	3	100	8.26
KBD 215	Alfa Romeo, Fiat, Lancia	F-V	257	22	20.2	51	59	127	4	2	98	11.26
KBD 217	Alfa Romeo, Fiat, Iveco	F-S	267	14	12.8	111	58	116	6	9	170	21.9
KBD 220	Hyundai	F-V	242	19	17	40.5	86	120	4	0	104	8.98
KBD 226	Dodge, Mitsubishi	F-V	255	20	18.4	45	86	150	6	0	108	10.86
KBD 227	Mitsubishi	F-V	276	20	18.4	45	86	172	6	0	108	12.04
KBD 228	Mazda	F-V	235	22	20	45	55	124	4	0	100	9.08
KBD 231	Ford, Mazda	F-V	256	20	18	20	86	86	6	0	108	8
KBD 233	Mercedes	F-V	262	22	20	45	67	142	5	3	112	10.76
KBD 234	Mercedes	F-S	303	16	14.4	83	85	158	5	1	130	17.16
KBD 235	Mercedes	F-V	278	22	19.4	69.9	80	150	5	5	112	13.38
KBD 240	Nissan	F-V	242	20	18	49	68	138	4	2	114.3	9.56
KBD 247	Saab	F-V	280	23.5	21.5	44	68	176	4	2	108	12.86
KBD 250	Saab	F-V	280	25	23	43	68	144	4	2	108	13.08
KBD 251	Lada	F-S	272	11	9.8	50.5	108	157	5	0	140	8.8
KBD 254	Ford	F-V	240	20	19	46	72	130	4	1	108	8.28
KBD 255	Subaru	F-V	212	18	15.5	37	65	99	4	0	94	5.9
KBD 256	Subaru	F-V	231	17	15.6	52	64	137	4	4	114.3	7.48

KBD 257	Suzuki	F-S	290	10	9	46	107	175	5	2	139.6	9.82
KBD 258	Suzuki	F-V	250	18.5	16.5	47	64	137	4	4	114.3	8.8
KBD 259	Suzuki	F-S	290	10	9	46	107	183	5	2	139.6	9.54
KBD 260	Toyota	R-S	242	9	8	37	54	131	4	2	100	6.02
KBD 265	Toyota	F-V	255	25	24	48	54	131	5	3	100	11.72
KBD 267	Toyota	F-V	238	22	21	48	54	127	4	2	100	8.98
KBD 268	Mitsubishi	R-S	265	10	8.4	50	90	154	4	2	114	7.4
KBD 269	Lotus, Toyota	F-V	258	20	19	26	76	144	4	0	100	9.36
KBD 270	Toyota	F-V	258	22	21	47	54	132	5	3	100	10.3
KBD 271	Toyota	F-S	238	12	11	48	54	127	4	2	100	7.6
KBD 274	Nissan, Renault	F-V	238	20	17.7	41	61	130	4	2	100	8
KBD 276	Toyota, Volkswagen	F-V	257	25	24	45	84	121	5	0	110	11.18
KBD 278	Seat, Volkswagen	F-S	256	12.9	11	39	65	134	4	1	100	8.9
KBD 281	Daihatsu	F-S	277	12.5	11.5	30	96	142	5	0	118	10.1
KBD 282	Daihatsu	F-V	277	18	17	33	96	142	5	0	118	10.34
KBD 284	Alfa Romeo, Fiat, Lancia	R-S	251.5	10	9	51	59	127	4	2	98	7.46
KBD 285	Mercedes	F-V	300	27.9	25.4	68	80	146	5	5	112	16
KBD 288	Alfa Romeo	R-S	250	10	8	21	62	134.3	6	0	80	6.86
KBD 290	Alfa Romeo	R-S	250	10	8	21	62	134	6	0	80	6.68
KBD 293	Jaguar	R-S	278	10	8	68	74	180	5	2	120.7	10.42
KBD 294	Nissan	F-V	250	22	20	37	81	140	6	0	103	10.46
KBD 297	Nissan	F-V	295	20	18	29	104	177	6	0	137	14.06
KBD 299	Saab	R-S	257	9	7.5	44	68	161	4	2	108	6.88
KBD 302	Volkswagen	F-S	258	16	13	58	67	135	5	1	112	10.96
KBD 304	Ford	F-V	254	24	22.2	43	78	103	5	0	100	11.76
KBD 305	Ford	F-V	270	24	22.2	43	78	103	5	0	100	13.72
KBD 306	Volkswagen	F-S	260	15.9	13	64	68	144	5	1	112	11.82
KBD 307	Volkswagen	F-V	280	24	22	65	68	144	5	1	112	14.18
KBD 308	Volvo	F-V	280	26	24	56	68	140	5	5	108	14.28
KBD 309	Caterham, Lotus, Rover Group	F-S	232	10	9	26	67	110	4	0	86.5	5.88
KBD 310	Kia, Mazda	F-S	219	13	11	37	74	120	4	0	94	6.6
KBD 312	Nissan	R-S	258	10	9	45	68	154	4	2	114.3	6.64
KBD 313	Ford	R-S	253	10	8.9	33	63.5	155	4	0	108	7.16
KBD 318	Volvo	R-S	265	10	8	53	68	160	5	5	108	8.46
KBD 319	Ford	R-S	270	10	8.6	63	63.5	180	4	0	108	9.56
KBD 320	Audi	R-S	245	9.9	8	40	68	134	4	0	108	7.02
KBD 324	Seat, Volkswagen	F-V	256	20	18	38.5	65	132	4	1	100	9.4
KBD 326	BMW	R-S	300	10	8.4	68	75	180	5	2	120	11.4
KBD 328	Peugeot	R-S	247	10	9	34.5	71	133	4	2	108	6.66
KBD 329	Audi	R-S	245	9.9	8	59	68	135	5	0	112	7.54
KBD 332	Citroen	R-S	224	9	8.1	63	71	135	5	2	108	5.6
KBD 333	Peugeot	R-S	290	10	9	44	71	185	5	3	108	9.7
KBD 336	Jaguar	R-S	294.5	9.8	8.8	66	74	180	5	2	120.5	11.14
KBD 337	Alfa Romeo, Lancia, Vauxhall	F-V	284	22	20.2	43	59	127	5	1	98	12.2
KBD 338	Alfa Romeo, Lancia	R-S	251	10	9	50	59	128	5	1	98	7.52
KBD 339	BMW	R-S	300	9.9	8.4	61	75	164	5	2	120	6.64
KBD 340	BMW	F-V	302	22	20.4	76	79	148	5	2	120	15.6
KBD 342	Toyota	F-V	300	20	19	48	100	167	6	2	139.5	13.8
KBD 343	Toyota	F-S	302.5	12.5	11.5	48	100	168	6	2	140	12.48
KBD 347	Alfa Romeo, Fiat, Lancia	F-V	284	22	20.2	40	59	127	4	2	98	13.36
KBD 349	Honda	F-V	240	21	19	45	60	125	4	4	100	9.06
KBD 350	Honda	F-V	262	21	19	51	64	141	4	4	100	10.6
KBD 352	Honda, Rover Group	F-V	260	23	21	34	92	138	4	0	114	10.3
KBD 353	Toyota	F-V	234	18	17	38	64	111	4	0	87	7.78
KBD 354	AC, Ford, TVR	F-V	260	24	23	58	63.5	136	4	1	108	12.3
KBD 356	Mazda	F-V	250	22	20	91	48	54	4	0	114.3	16.02
KBD 357	Mazda	F-V	276	22	20	66	77	146	5	2	114.3	14
KBD 359	Mercedes	R-S	278	9	7.3	57	67	164	5	2	112	8.16
KBD 360	Mercedes	F-V	295	22	19.4	50	67	154	5	3	112	14.26
KBD 362	Peugeot	R-S	247	8	7	20.5	71	133	4	2	108	5.36
KBD 363	Mitsubishi	F-V	258	22	20	33	84	154	6	0	104	10.42
KBD 364	Dodge, Mitsubishi	F-V	277	22	20.4	45.2	87	170	6	0	108	12.54
KBD 365	Mitsubishi	F-V	258	22	20.4	34	84	154	5	0	104	10.54
KBD 367	Nissan	F-V	280	22	20	49	68	144	5	2	114.3	14.2
KBD 368	Nissan	F-V	280	26	24	57	68	144	5	2	114.3	16.86
KBD 369	Ford, Nissan	F-V	277	26	24	40	100	163	6	0	124	14.6
KBD 373	Subaru	F-V	240	18	15.5	36	65	99	4	0	94	7.94
KBD 374	Citroen, Peugeot	F-V	247	20.5	19.5	44.5	66	133	4	2	108	9.14
KBD 377	Honda, Rover Group	R-S	239	10	8	49	61	153	4	4	100	7.06
KBD 378	Mitsubishi	F-V	255	20	18.4	34	84	150	5	0	104	9.76
KBD 384	Audi	F-V	256	22	20	56	68	132	4	0	108.5	11.14

KBD 386	Audi	F-V	276	25	23	56	68	135	4	0	108	15.04
KBD 387	Audi	F-S	256	13	11	56	68	134	4	0	108	9.78
KBD 388	Audi	F-S	288	15	13	46.5	68	134	5	0	112	13
KBD 389	Audi, Seat, Skoda, Volkswagen	F-V	288	25	23	46	68	135	5	4	112	16.02
KBD 390	Audi, Skoda, Volkswagen	R-S	245	10	8	64	68	136	5	0	112	7.88
KBD 393	Audi	R-V	269	20	18	46	68	156	5	0	112	10.94
KBD 395	Citroen	F-S	247	10	9	33	57	124	3	1	98	6.66
KBD 396	Citroen, Peugeot	F-V	283	26	24	48	71	130	5	2	108	14.94
KBD 399	Mercedes	R-S	290	12	9.8	60	67	164	5	2	112	11.56
KBD 400	Toyota	F-V	243	18	17	48	54	131	4	2	100	8.34
KBD 401	Mercedes	F-V	284	22	20	45	66	151	5	3	112	12.94
KBD 402	Mercedes	F-V	300	28	25.4	45	66	155	5	3	112	15.6
KBD 403	Citroen, Peugeot	F-V	247	20.5	18.5	34	66	133	4	2	108	8.9
KBD 404	Seat, Volkswagen	F-V	280	22	20	39	65	137	4	1	100	12.6
KBD 405	Mercedes	R-V	300	22	19.4	60	67	164	5	2	112	14.9
KBD 409	BMW	F-V	324	30	28.4	77	79	149	5	2	120	21.68
KBD 410	BMW	R-S	324	12	10.4	61	75	180	5	2	120	14.12
KBD 411	Alfa Romeo	F-V	281	26	24.2	43	59	127	5	1	98	14
KBD 412	AC, Ford, TVR	F-V	240	24	22.6	58	63.5	136	4	1	108	10.04
KBD 413	Renault	R-S	238	8	7	75	52	48	4	0	100	8.02
KBD 418	Porsche	F-V	282	24	22.6	35	107	146	5	5	126	11.66
KBD 424	Seat, Volkswagen	R-S	226	10	8	71.3	40	52	4	0	100	9.44
KBD 425	Toyota	R-S	231	10	9	47	60	140	4	2	114.3	6.62
KBD 428	Nissan	F-V	257	22	20	49	68	144	4	2	114.3	11.24
KBD 429	Porsche	F-V	298	28	26	45	107	156	5	0	126	14.38
KBD 430	Porsche	F-V	282.5	20.5	19	74	103	157	5	4	130	12.46
KBD 431	Porsche	F-V	298	28	26	74	103	157	5	4	130	15.28
KBD 432	Opel, Vauxhall	F-V	296	28	25	58	70	139	5	1	110	17.06
KBD 435	Ford	R-V	253	20	18	44	63.5	153	4	0	108	9.02
KBD 437	Daihatsu	R-S	236	10	9	40	56	146	4	3	100	6.3
KBD 438	BMW	F-V	286	22	20	51	79	148	5	1	120	12.84
KBD 439	BMW	R-S	280	10	8.4	60	75	161	5	1	120	9.4
KBD 441	Lotus, Rover Group	F-S	245	12.7	11.4	27.8	67	115	4	0	86.5	7.9
KBD 442	Honda	R-S	260	10	8	54	64	158	4	4	114.3	7.28
KBD 443	Mitsubishi	F-V	276	24	22	44	68	145	5	8	114.3	11.88
KBD 444	Alfa Romeo, Fiat, Lancia	F-V	257	20	18.2	51	59	127	4	2	98	10.06
KBD 446	Hyundai	F-V	257	22	20	34	85	128	4	0	104	10.48
KBD 447	Opel, Vauxhall	F-V	256	20	17	41	60	123	4	3	100	9.72
KBD 450	Mazda	R-S	251	9	7	35	55	125	4	3	100	7.48
KBD 453	Nissan, Renault	F-V	258	20.6	17.7	41	61	131	4	2	100	10.16
KBD 459	Mitsubishi, Proton, Volvo	F-V	256	24	22.4	45	69	144	4	4	114	10.2
KBD 465	Nissan	F-V	267	22	20	39	100	140	6	0	124	11.1
KBD 468	Porsche	F-V	298	28	26	80	103	161	5	4	130	16.44
KBD 469	Porsche	R-V	299	24	22	100	103	180	5	5	130	15.82
KBD 470	Renault	R-S	238	8	7	74.5	52	49	4	0	100	7.84
KBD 471	Citroen, Peugeot	F-V	283	22	20	27	66	133	4	2	108	12.12
KBD 473	Renault	F-V	285	21	19	32	61	134	5	2	108	12.14
KBD 474	Citroen, Peugeot	R-S	247	8	6	25.5	71	133	4	2	108	5.4
KBD 478	Toyota	F-V	289	20	18	64	100	155	6	0	127	12.5
KBD 480	Ford	F-V	260	24	22.2	47	63.5	136	4	0	108	11.08
KBD 481	Nissan	F-V	263	24	22	53	96	145	5	0	118	12.98
KBD 483	Ford, TVR	R-V	273	20	18	43	63.5	154	4	0	108	10
KBD 484	Taxi (Fairway)	F-V	278	24	22	41	95	136	6	0	116	13.78
KBD 488	Citroen	R-S	224	9	8.1	57	71	133	4	1	108	6
KBD 489	Renault	F-V	262	22	19.9	44	61	132	4	2	100	11.74
KBD 490	Renault	F-V	262	22	19.8	44	61	132	5	2	108	12
KBD 491	Renault	F-V	280	24	21.8	44	61	132	5	2	108	13.62
KBD 495	Renault	R-S	265	10.5	9.5	44	66	150	4	2	100	8.54
KBD 496	Renault	R-S	265	10.5	9.5	44	66	150	5	2	108	8.7
KBD 497	Renault	R-S	265	10.5	9.5	44.5	61	149	5	2	108	8.52
KBD 504	Audi	F-V	280	22	20	56	68	146	4	0	108	12.66
KBD 505	Audi	F-S	280	13	11	56	68	159	4	0	108	11.12
KBD 510	Honda, Rover Group	F-V	262	21	19	45	64	141	4	4	100	10.24
KBD 511	Honda, Rover Group	F-V	282	23	21	34	92	138	4	0	114.3	12.62
KBD 512	Honda	F-V	282	25	23	35	92	139	4	0	114.3	12.38
KBD 513	Honda, Rover Group	R-S	260	10	8	48	64	157	4	4	114	7.94
KBD 514	Honda	R-S	260	10	8	43	64	159	4	4	114.3	7.5
KBD 516	Honda	R-S	282	9	7.5	62	70	170	5	5	114.3	8.24
KBD 517	Honda	F-V	260	23	21	48	64	141	4	4	114.5	10.8
KBD 518	Honda	F-V	282	23	21	48	64	141	4	4	114	12.58
KBD 520	Mazda	F-V	257	22	20	45	55	125	4	1	100	10.82

KBD 521	Ford, Mazda	F-V	258	24	22	49	72	143	5	1	114.3	10.94
KBD 522	Mazda	F-V	235	18	16	45	55	125	4	1	100	7.76
KBD 523	Mazda	R-S	230	9	8	34	55	125	4	3	100	5.6
KBD 525	Ford, Mazda	R-S	261	9.8	8	40	72	143	5	1	114	7.54
KBD 526	Mercedes	R-S	258	9	7.3	55	67	158	5	1	112	7.2
KBD 527	Mercedes	F-V	284	22	19.4	43	67	154	5	1	112	12.56
KBD 528	Mercedes	F-S	284	12	10	43	67	154	5	1	112	10.26
KBD 532	Nissan	R-S	258	9	8	44	68	154	4	2	114	7.1
KBD 537	Nissan	R-S	234	7	6	40	68	139	4	2	100	5.08
KBD 542	Subaru	F-V	260	24	22	57	58	130	5	2	100	10.2
KBD 547	Toyota	R-S	269	10	9	60	54	169	5	3	100	8.9
KBD 548	Toyota	F-V	255	22	21	46	54	131	5	3	100	9.76
KBD 549	Mitsubishi	F-V	256	24	22	45	69	145	5	8	114.3	10.12
KBD 550	Toyota	R-S	269	10	9	65	62	170	5	3	114.3	9.18
KBD 551	Toyota	F-V	275	28	26	50	62	141	5	2	114.3	13.6
KBD 552	Toyota	R-S	288	10	9	65	62	170	5	3	114.3	10.62
KBD 553	Toyota	F-V	277	25	23	47	54	131	5	3	100	14.1
KBD 554	Toyota	R-S	288	10	9	60	54	170	5	3	100	10.12
KBD 556	Toyota	R-S	263	10	9	39	54	131	4	2	100	7.4
KBD 557	Toyota	F-V	258	25	24	48	62	146	5	2	114.3	10.28
KBD 558	Toyota	R-V	263	16.5	15	47	62	168	5	7	114.3	8
KBD 559	Toyota	R-V	291	18	17	68	60	190	5	3	114.3	11.64
KBD 560	Toyota	F-V	255	25	23	53	62	154	5	2	114.3	11.28
KBD 561	Toyota	F-V	279	22	20	53	62	146	5	2	114.3	13.78
KBD 562	Toyota	F-V	271	25	23	53	62	147	5	0	114	13.2
KBD 563	Lexus, Toyota	F-V	296	32	30	51	62	143.5	5	12	114.3	19.52
KBD 564	Lexus, Toyota	R-V	307	16	15	67	62	190	5	17	114.3	12.38
KBD 565	Seat, Volkswagen	F-V	280	22	20	28	65	141	5	1	100	11.2
KBD 566	Seat, Volkswagen	R-S	226	10	8	71	40	52	5	0	100	9.56
KBD 567	Volkswagen	F-S	278	13	11.5	86	66	137	5	2	112	13.52
KBD 569	Volvo	F-V	280	26	23	50	68	139	4	4	108	12.98
KBD 570	Volvo	R-S	295	9.6	8.4	72	68	178	4	2	108	10.82
KBD 572	Nissan	F-V	305	26	24	35	104	158	6	0	137	18.46
KBD 573	Toyota	F-V	311	32	30	58	105	160	6	0	139.8	16.88
KBD 575	Daihatsu, Toyota	F-S	234	12.5	11.5	38	64	110	4	0	87	7.32
KBD 576	Nissan	F-V	254	20	18	45	61	133	4	2	100	10.9
KBD 577	Toyota, Volkswagen	F-V	302	20	19	48	100	168	6	2	139.8	13.24
KBD 584	Volvo	R-S	228	9	8	40	60	127	4	1	100	5.6
KBD 585	Ford	F-V	260	24	22.2	44	63.5	136	4	0	108	11.26
KBD 586	Mitsubishi	F-V	276	24	22.4	45	69	145	4	4	114.3	12.22
KBD 587	Mitsubishi	F-V	256	24	22.4	34	86	136	4	0	104	10.08
KBD 589	Hyundai	F-V	242	19	18	37	86	126	4	0	104	8.92
KBD 590	Volvo	F-V	280	26	23	50	68	139	5	5	108	13.18
KBD 591	Volvo	R-S	295	9.6	8.4	72	68	178	5	2	108	10.52
KBD 592	Isuzu, Opel, Vauxhall	F-V	280	26	24.6	36	88	175	6	3	109	14.48
KBD 593	Isuzu, Opel, Vauxhall	F-V	280	26	24.6	36	88	175	6	3	109	14.48
KBD 594	Isuzu, Opel, Vauxhall	R-V	313	18	16.6	80	101	210	6	1	140	15.26
KBD 596	Renault	F-V	285	21	19	32	61	130	4	2	100	12.5
KBD 598	Opel, Vauxhall, Saab	F-V	284	24	21	41	70	144	5	3	110	14.06
KBD 599	Opel, Vauxhall	R-S	270	10	8.5	77	65.5	160	5	2	110	10.12
KBD 600	Opel, Vauxhall	R-S	286	12	10	69.5	65.5	160	5	2	110	11.6
KBD 602	Mazda	F-S	235	12.2	10	45	55	128	4	1	100	7.2
KBD 603	Dodge, Mitsubishi	F-V	296	30	28.4	45	69	145	5	2	114.3	14.62
KBD 604	Dodge, Mitsubishi	R-V	284	20	18.4	52	90	168	5	3	114.3	12.72
KBD 605	Toyota	F-V	285	25	23	58	105	160	6	0	139.7	14.54
KBD 607	Toyota	F-V	302	22	21	53	60	162	5	2	114.3	15.2
KBD 608	Toyota	F-V	255	28	26	49	62	140	5	2	114	12.32
KBD 609	Toyota	F-V	255	22	20	48.3	55	131	4	2	100	9.96
KBD 611	Toyota	F-V	255	25	23	42	74	152	4	0	100	11.06
KBD 612	Ford	F-V	245	20	19	32	68	114	4	0	92	8.4
KBD 613	Toyota	F-V	255	25	24	49.5	55	131	5	2	100	10.52
KBD 614	Toyota	F-V	255	28	26	50	55	131	5	2	100	12.22
KBD 616	Toyota	R-S	269	9	8	65	55	170	5	3	100	9.08
KBD 617	Daihatsu	R-S	231	9	7	37	56	146	4	3	100	5.34
KBD 619	Volkswagen	F-S	282	18	15	65	68	144	5	1	112	14.92
KBD 622	Porsche	R-V	289	20	18.6	100	103	178	5	5	130	12.84
KBD 627	Audi	F-V	276	25	23	59.5	68	134	5	0	112	15.06
KBD 628	Audi	R-V	269	20	18	60	68	156	10	0	112	10.82
KBD 631	BMW	R-S	282	12	10.4	65	75	161	5	1	120	10.98
KBD 632	BMW	F-V	296	28	26.4	55	79	145	5	2	120	14.84
KBD 633	BMW	R-S	300	10	8.4	95	75	165	5	1	120	12.72

KBD 634	Mitsubishi	F-V	276	24	22.4	45.3	87	136	6	4	108	12.26
KBD 635	Mitsubishi	R-S	315	18	16.4	84	108	197	6	3	140	17.88
KBD 637	Nissan	F-V	257	26	24	45	61	130	4	0	100	12.44
KBD 638	Nissan	R-S	258	9	8	44	68	154	4	2	100	7.12
KBD 639	Nissan	R-S	258	9	8	33	68	153	4	2	100	6.84
KBD 643	Nissan, LDV	F-V	257	26	24	52	68	140	5	2	114.3	12.48
KBD 644	Nissan	R-S	266	9	8	65	68	172	4	3	114	9.88
KBD 646	Nissan	F-V	280	30	28	54	68	144	5	2	114	16.16
KBD 647	Nissan	R-V	297	18	16	64	68	172	5	1	114.3	13.6
KBD 648	Mercedes	F-V	294	25	22.4	50	67	154	5	3	112	15.12
KBD 651	Mercedes	F-V	284	22	19.4	44	67	152	5	3	112	12
KBD 653	Citroen	F-S	238	10	9	29	57	124	3	1	98	5.94
KBD 654	Mercedes	R-V	300	22	19.4	58	67	164	5	2	112	15.28
KBD 659	Lancia	F-V	281	26	24.2	54	59	127	5	1	98	14.88
KBD 660	Mitsubishi	F-V	313	30	28.4	45	69	145.5	5	0	114.3	18.48
KBD 671	Mazda	F-V	292	22	20	67	72	143	5	3	114.3	13.74
KBD 674	Mitsubishi, Proton	F-V	236	18	17	45	64	126	4	2	100	7.86
KBD 675	Mazda	F-V	274	28	26	52	72	142	5	1	114.3	14.58
KBD 676	Mazda	R-S	286	9.5	7.5	58	72	190	5	2	114.3	9.78
KBD 679	Mitsubishi	R-V	266	18	16.4	66	90	167	5	3	114.3	10.24
KBD 681	Mitsubishi	R-S	262	10	8.4	59	90	168	4	3	114.3	8.9
KBD 684	Mitsubishi, Proton	F-S	234	13	11.4	34	86	126	4	0	104	7.08
KBD 685	Renault	R-S	255	10.5	9.5	30.5	66	134	4	2	100	7.08
KBD 689	Ford, Mazda	F-S	240	12	10	43	63.5	136	4	0	108	7.76
KBD 692	Subaru, Suzuki	F-V	231	17	15	50	64	136	4	4	114	7.28
KBD 693	Suzuki	F-V	287	17	15	46	107	182	5	2	140	9.62
KBD 694	Toyota	R-V	311	18	16	102	106	210	6	3	140	15
KBD 695	Toyota	F-V	275	30	28	48	62	146	5	2	114	16.04
KBD 696	Toyota	R-V	281	22	21	47	62	147	5	7	114	12.42
KBD 697	Toyota	F-V	230	16	15	44	55	127	4	2	100	6.92
KBD 698	Toyota	F-V	238	18	17	42.5	55	127	4	2	100	8
KBD 708	Audi	F-S	280	13	11	46	68	131	5	0	112	10.68
KBD 709	Audi	R-S	245	10	8	84	45	52	5	0	112	11.42
KBD 710	Audi, Volkswagen	R-S	245	10	8	48	68	136	5	0	112	7
KBD 711	Audi	R-V	269	20	18	64	68	155	5	5	112	10.94
KBD 713	Audi	F-V	314	30	28	59.5	68	144	5	5	112	20.74
KBD 727	BMW	R-V	276	19	17.4	60	75	160.8	5	1	120	11.64
KBD 732	BMW	F-V	315	28	26.4	76	79	148	5	3	120	20.06
KBD 737	BMW	F-V	316	28	26.4	77	79	145	5	2	120	19.22
KBD 738	BMW	F-V	334	32	30.4	77	79	173	5	1	120	23.12
KBD 739	BMW	R-V	328	20	18.4	61	75	180	5	2	120	15.14
KBD 740	BMW	F-V	324	30	28.4	77	79	149	5	2	120	21.68
KBD 743	Citroen	F-S	258	10	9	29	57	124	3	1	98	7.04
KBD 744	Citroen, Fiat, Lancia, Peugeot	R-S	295	10	8	56	59	180	5	2	98	10.72
KBD 745	Citroen, Fiat, Peugeot	F-S	280	18	15.9	65.5	73	141	5	2	118	15.7
KBD 746	Citroen, Fiat, Peugeot	F-V	280	24	21.9	65.5	73	141	5	2	118	14.64
KBD 747	Citroen, Fiat, Peugeot	F-V	300	24	21.9	65.5	80	158	5	2	130	16.26
KBD 749	Toyota	F-V	275	28	26	49.5	55	132	5	2	100	13.48
KBD 750	Toyota	R-S	269	10	9	64.7	55	170	5	3	100	9.18
KBD 751	Alfa Romeo	F-S	272	12.6	10.7	68.4	82	126	4	2	108	12.5
KBD 752	Alfa Romeo	R-S	267	9.4	7.5	65	70	160	4	4	108	9.54
KBD 754	BMW	F-V	260	22	20.4	35.5	66	137	4	1	100	10.24
KBD 756	Seat, Volkswagen	F-S	239	10	8	33	65	125	4	1	100	6.16
KBD 757	Chrysler, Dodge, Plymouth	F-V	282	24	22.4	38	73.5	144	5	0	114	12.52
KBD 758	Nissan	F-V	280	22	20	49	68	144	4	2	114.3	13.38
KBD 763	Jaguar	R-V	305	20	18.5	68	74	180	5	1	120.6	14.26
KBD 767	Volvo	R-S	265	10	8.4	71	68	160	5	5	108	9.28
KBD 768	MG	R-S	240	10	8	43	66	120	4	2	95.25	6.94
KBD 769	Opel, Saab, Vauxhall	F-V	288	25	22	43	70	139	5	3	110	15.1
KBD 770	Opel, Saab, Vauxhall	R-S	286	10	8	70	65.5	160	5	2	110	10.3
KBD 771	Jaguar	F-V	325	28.5	27	49.5	74	154.5	5	0	120.6	21.78
KBD 773	Seat, Volkswagen	F-V	239	18	16	34.5	65	124	4	1	100	7.82
KBD 774	Alfa Romeo	F-V	284	22	20	40	59	127	5	1	98	13.16
KBD 775	Alfa Romeo	F-V	257	20	18	41	59	127	5	1	98	10
KBD 776	Alfa Romeo	R-S	240	11	9.2	40	59	122	5	1	98	7.4
KBD 777	Citroen, Fiat, Peugeot	F-V	257	20	18.2	41	59	127	5	1	98	9.98
KBD 779	Alfa Romeo, Lancia	F-V	281	26	24	48	59	135	5	5	108	13.08
KBD 780	Skoda	F-S	236	13	11.4	49	62	125	4	1	100	7.4
KBD 782	Opel, Vauxhall	R-S	270	10	8	70	57	157	4	3	100	14.44
KBD 783	Mercedes	F-V	288	25	22.4	46	67	154	5	2	112	13.84
KBD 786	Mercedes	R-S	290	10	8.3	55	67	164	5	2	112	9.64

KBD 787	Mercedes	F-V	316	28	25.4	46.5	67	164	5	1	112	18.54
KBD 789	Mercedes LCV, Volkswagen	R-S	258	12	10	96	85	160	5	2	130	13.32
KBD 790	Mercedes LCV, Volkswagen	F-V	276	22	19	76	84	156	5	2	130	14.78
KBD 791	Mercedes LCV, Volkswagen	R-S	272	16	14	96	85	160	5	2	130	14.72
KBD 792	BMW	R-S	272	10	8.4	78	75	161	5	1	120	9.96
KBD 795	Daihatsu, Piaggio	F-S	210	16	15	37	70	118	4	0	97	7.2
KBD 796	Skoda	F-S	236	12.9	11.4	46.5	62	125	4	1	100	7.84
KBD 797	Ford	R-V	253	20	18	44	63.5	154	5	0	112	8.32
KBD 798	Peugeot	F-V	260	24	22	28	66	133	4	2	108	11.76
KBD 799	Citroen, Peugeot	F-V	282.5	26	24	28	66	133	4	2	108	13.84
KBD 800	Volkswagen	F-V	288	25	23	29	65	136	5	1	100	14.82
KBD 801	Alfa Romeo, Lancia	R-S	276	10	9	51.7	59	138	5	5	108	9.24
KBD 804	Peugeot	F-V	305	28	26	28	66	133	4	2	108	16.7
KBD 805	Chrysler, Mercedes	R-S	278	9	7.3	55	67	164	5	2	112	8.16
KBD 806	Toyota	F-V	254	18	17	43	55	131	4	2	100	8.18
KBD 807	Subaru	F-V	277	24	22	57	58	129	5	2	100	12.38
KBD 808	Subaru	R-S	266	10	8.5	67	58	170	5	2	100	9.44
KBD 809	Subaru	F-V	294	24	22	56	58	128	5	2	100	13.8
KBD 810	Toyota	F-V	258	22	21	47	54	131	4	2	100	7.98
KBD 811	BMW	F-V	296	22	20.4	76	79	143	5	1	120	16.04
KBD 814	Renault	R-S	238	8	7	75	52	49	4	0	100	8.46
KBD 817	Honda	F-V	282	23	21	47	70	148	5	4	114.3	12.8
KBD 820	Mitsubishi	F-V	276	27	25.4	45	87	136	6	4	108	13.8
KBD 821	Mazda	F-V	256	20	18	45	55	125	4	1	100	11.44
KBD 822	Nissan	R-S	258	9	8	47	68	154	5	2	114.3	11.84
KBD 823	Nissan	F-V	232	18	16	45.5	61	130	4	2	100	7.7
KBD 824	Nissan	F-V	247	18	16	45	61	130	4	2	100	8.72
KBD 825	Suzuki	R-S	240	10	8	33	58	137.5	4	4	100	6.48
KBD 826	Nissan	R-V	316	18	16	80	111	190	6	1	139.6	15.1
KBD 829	Suzuki	F-V	235	20	18	50.5	60	125	4	3	100	8.22
KBD 830	AC, Ford	F-V	278	24	22.2	47	63.5	136	4	0	108	13.06
KBD 832	Toyota	R-S	266	9	8	36.5	55	131	4	2	100	7.3
KBD 833	Toyota	R-V	335	18	16	103	106	230	6	3	140	16.64
KBD 837	Mitsubishi, Proton	F-S	234	13	11.4	45	64	126	4	2	100	7.78
KBD 840	Chrysler, Mercedes	F-V	300	28	25.4	46.5	67	154.2	5	2	112	16.68
KBD 841	Honda	F-V	282	23	21	47	64	142	4	4	114.3	13.06
KBD 844	Mazda	R-S	251	9	8	34.5	72	142	5	1	114.3	6.2
KBD 845	Mazda	F-V	274	22	20	45	72	141	5	1	114	11.88
KBD 846	Mitsubishi, Proton	R-S	260	10	8.4	41	64	154	4	2	100	7.64
KBD 847	Mitsubishi	F-V	254	24	22.4	39	87	154.3	5	0	108	9.58
KBD 849	Toyota	F-V	285	28	26	45	84	175	6	0	127	16
KBD 850	Toyota	F-V	255	25	23	49	55	132	5	2	100	10.56
KBD 851	Subaru	F-V	242	18	16	53	58	129	5	2	100	8.66
KBD 852	Audi, Seat, Volkswagen	F-V	239	20	18	39	65	123	4	1	100	8.22
KBD 853	Kia	F-V	284	24	22	51	96.3	171	5	4	139.7	13.1
KBD 856	Toyota	F-V	258	22	21	48	54	131	4	2	100	16
KBD 857	Ford, Seat, Volkswagen	F-V	288	25	21	55	68	145	5	1	112	15.6
KBD 858	Ford, Seat, Volkswagen	R-S	268	9.7	8	45	68	154	5	1	112	8.9
KBD 859	BMW	R-S	298	10	8.4	61	75	185	5	1	120	10.72
KBD 860	BMW	R-V	298	20	18.4	61	75	185	5	1	120	12
KBD 861	Citroen	R-S	251	12	10.8	62	71	135	4	1	108	8.84
KBD 862	Hyundai	F-V	253	20	18.4	28	84	150	5	0	104	9.6
KBD 863	Iveco	F-S	290	22	19	110.5	68	125	6	6	170	31.9
KBD 864	Iveco	R-S	289	22	19	84	84	172	8	0	108	19.2
KBD 865	Mercedes	F-V	276	22	19	60	67	153	5	1	112	12.7
KBD 866	Mercedes	R-S	280	10	8	65	67	178	5	1	112	9.36
KBD 867	Rover Group	F-S	262	13	11	44	64	141	4	4	100	9
KBD 869	Mitsubishi, Proton, Volvo	R-S	260	10	8.4	41	90	154	4	2	114	7.2
KBD 874	Audi, Seat, Skoda, Volkswagen	F-V	256	22	19	37	65	132	5	1	100	10.4
KBD 875	Audi, Seat, Skoda, Volkswagen	F-V	288	25	22	34	65	136	5	5	100	15.08
KBD 876	Audi, Seat, Skoda, Volkswagen	F-V	280	22	19	37	65	133	5	1	100	12.38
KBD 877	Audi, Seat, Skoda, Volkswagen	R-S	232	9	7	40	65	125	5	1	100	5.6
KBD 878	BMW	R-S	272	10	8	83	75	152	5	1	120	9.98
KBD 879	Chrysler (USA)	F-V	260	22	20.4	38	61	136	5	0	100	9.52
KBD 880	Chrysler (USA)	F-V	282	22	20.4	38	74	144	5	0	114	12.04
KBD 881	Chrysler (USA)	F-V	257	20	18.4	38	61	134	5	0	100	9.24
KBD 882	Chrysler (USA)	R-S	270	9	7.3	52	57.5	156	5	0	100	8.2
KBD 883	Chrysler (USA)	F-V	280	24	22.7	81.5	72	156	5	0	114	14.4
KBD 884	Chrysler (USA)	R-S	284	11	9	60	72	171	5	0	114.3	11.2
KBD 885	Citroen, Peugeot	F-S	266	13	11	27	66	133	4	2	108	8.84
KBD 887	Citroen	F-V	288	28	26	34	66	133	4	2	108	17.54

KBD 888	Ford	F-V	285.7	26	24.5	66.6	72	152	5	0	114	14.42
KBD 889	Ford	F-S	284	12	11	58	71	183	5	0	114.3	11.06
KBD 890	Jaguar	F-V	305	28	26	49.5	74	154	5	0	120.6	17.54
KBD 892	Nissan	F-V	214	15	13	46	61	126	4	0	100	5.98
KBD 894	Nissan	R-S	278	9	8	45	68	154.5	5	0	114.3	8.18
KBD 895	Opel, Vauxhall	F-V	278	32	30.7	52	70.75	150	5	0	118	13.98
KBD 896	Opel, Vauxhall	R-S	279	11	10	51	70.7	175	5	0	118	10
KBD 897	Reliant, Triumph	F-S	272	13	11	37	79	124	4	0	102	10
KBD 903	Toyota	R-V	315	16	14.5	60	55	170	5	3	100	13.4
KBD 905	BMW	F-V	315	28	26.4	52.5	79	152	5	1	120	32
KBD 907	Toyota	F-V	301.5	18	16	46	62	156	5	2	114	12.14
KBD 909	Jaguar	F-V	300	30	28	43.5	71	144	5	0	108	16.54
KBD 910	Audi, Seat, Volkswagen	F-V	280	22	20	46	68	146	5	1	112	12.72
KBD 911	Volkswagen	F-V	283	25	23	47	68	136	5	0	112	14.2
KBD 912	Volvo	R-S	283	10	8	62	68	178	5	5	108	9.78
KBD 916	Alfa Romeo	F-V	305	28	26	44.5	59	151	5	5	98	16.6
KBD 917	Fiat	F-V	305	28	26	45	59	152	4	2	98	16.24
KBD 918	Audi	R-S	245	10	8	53.65	68	136	5	0	112	7.38
KBD 919	Mercedes	F-S	260	12	10	40	67	145	5	1	112	8
KBD 920	Mercedes	F-V	260	22	19.4	40.5	67	145	5	1	112	9.6
KBD 921	Mercedes	F-V	303	26	23	51	67	168	5	1	112	15
KBD 922	Mercedes	R-S	285	15	13	55	67	184	5	1	112	12.4
KBD 923	Opel, Vauxhall	F-S	256	11	8	41	60	122	4	3	100	8.08
KBD 924	Opel, Vauxhall	F-V	256	24	21	41	60	120	4	3	100	11.14
KBD 925	Opel, Vauxhall	F-V	280	25	22	42	70	138	5	3	110	13.3
KBD 926	Opel, Vauxhall	R-S	240	10	8	41	57	140	4	1	100	6.54
KBD 927	Opel, Vauxhall	R-S	264	10	8	42	65.5	145	5	1	110	8.2
KBD 928	Porsche	F-V	298	24	22	67	98	159	5	4	130	14.26
KBD 929	Porsche	R-V	292	20	18	67	98	158	5	4	130	12.2
KBD 930	Mercedes	R-S	290	10	8.3	57	67	164	5	2	112	9.8
KBD 931	Mercedes	R-S	290	12	10.3	56	67	164	5	1	112	10.88
KBD 932	Volkswagen	F-S	282	18	15	55	68	146	5	1	112	15.06
KBD 933	Volkswagen	F-V	280	24	20	55	68	145	5	1	112	13.86
KBD 934	Volkswagen	R-S	280	12	10	40	68	145	5	1	112	10.54
KBD 935	BMW	R-V	312	20	18.4	61	75	180	5	1	120	28
KBD 941	Porsche	F-V	304	32	30	72	102	195.25	5	3	130	32
KBD 942	Toyota	F-V	323	30	29	50	62	199.4	5	2	114.3	20
KBD 944	Volvo	F-V	302	26	23	50	68	151	5	5	108	15.08
KBD 945	Kia	F-V	243	20	18	42	57	136	4	3	100	8.36
KBD 946	Citroen, Peugeot	F-S	247	13	11	34	66	133	4	2	108	8.06
KBD 947	Land Rover	F-S	261	14	11	51	66	141	5	2	114	10.5
KBD 948	Alfa Romeo	F-S	281	15	13.2	44.5	59	127	5	1	98	12.2
KBD 949	Hyundai	R-S	258	10	8	40.46	76	154	4	2	114.3	7.52
KBD 950	Ford, Mazda	F-V	258	22	20	43.5	63.5	136	4	0	108	10.84
KBD 951	Daihatsu	F-S	273	16	14	37.5	66.5	162	5	2	114.3	11.28
KBD 953	Honda	R-S	260	9	7	43	64	157	5	2	114.3	7.32
KBD 955	Hyundai	R-S	260	12	11	60	90	158	4	2	114.3	9.18
KBD 956	Daewoo, Ssangyong	F-V	278	24	22.5	40	88	172	6	0	109	12.36
KBD 957	Ssangyong	R-S	299	10.5	8.5	67.5	105.5	190	6	2	139.7	12.6
KBD 958	Jaguar	R-V	288	20	18.5	32.5	64.5	160	5	0	108	11.52
KBD 959	Suzuki	F-V	245	20	18	50	60	126	4	2	100	9.04
KBD 961	Suzuki	F-V	232	17	15	50	60	125	4	2	100	7.56
KBD 962	Toyota	F-V	320	22	20	70	108	173	6	0	139.5	14.22
KBD 965	Rover	F-V	284	22	19	38	64	142	5	1	100	13.06
KBD 966	Rover	R-S	280	10	8	62.5	64	160.8	5	1	100	8.8
KBD 969	Saab	R-S	286	10	8	69	65.5	160	5	2	110	9.94
KBD 970	Mitsubishi, Volvo	F-V	281	24	22	46	69	147	4	2	114	12.4
KBD 971	Audi, Seat, Skoda, Volkswagen	F-V	312	25	23	34	65	135	5	5	100	15.88
KBD 972	Audi, Seat, Skoda, Volkswagen	R-V	256	22	20	36	65	135	5	1	100	9.54
KBD 973	Mercedes	F-V	345	32	30	51	67	202	5	3	112	25.2
KBD 974	Mercedes	R-S	331	14	12	56	67	184	5	1	112	16.8
KBD 975	Proton, Mitsubishi	F-V	256	24	22	45	64	144	4	2	100	10.26
KBD 976	BMW	F-V	300	22	20.4	51	79	164	5	1	120	13.42
KBD 977	BMW	R-V	294	19	17.4	60	75	160	5	1	120	13.12
KBD 978	Citroen, Mitsubishi, Peugeot	F-V	294	24	22.4	45.75	69	148	5	2	114.3	14.16
KBD 979	Mitsubishi	F-V	320	32	29.8	43.5	69	150	5	2	114.3	19.48
KBD 981	Chevrolet, Daewoo	F-S	236	12.5	9.7	36	86	106	4	0	102	7.68
KBD 982	Daewoo	F-V	256	24	22	47	60	134	4	3	100	11.62
KBD 983	Daewoo	R-S	257.3	10.6	9	64	57	168	4	1	100	9.9
KBD 985	Lexus	R-S	307	12	10	63.5	62	190	5	7	114.3	12.54
KBD 987	Lexus	F-V	315	28	26	53	62	167	5	12	114.3	19.7

KBD 989	Toyota	F-V	260	25	23	49.2	55	131	5	2	100	11.6
KBD 990	Toyota	F-V	235	18	16	43	55	129	4	2	100	8
KBD 991	Audi	R-S	255	10	8	48	68	144	5	0	112	7.54
KBD 992	Ford, Mazda	F-V	239	20	18	43	63.5	136	4	1	108	8.54
KBD 993	Alfa Romeo, Lancia	F-V	310	28	26	47	59	141	5	5	108	16.62
KBD 994	Ford	F-V	294	24.3	22.1	43	82	136	5	0	100	15
KBD 995	Toyota	F-V	255	20	18	43	55	129	4	2	100	10.1
KBD 999	Renault	R-S	265	10.5	9.5	54	66	149	5	2	108	9.02
KBD1000	Renault	F-V	280	24	21.8	44	61	140	4	2	100	15.6
KBD1001	Nissan, Renault, Vauxhall	F-V	280	24	21	61	80	122	6	0	110	15.26
KBD1002	Daewoo	F-V	256	24	22	47	60	137	5	3	114.3	11.74
KBD1003	Daewoo	R-S	258	10	8	64.6	57	168	5	1	114.3	9.88
KBD1004	Daihatsu, Subaru	F-V	234	16	15	41	55	124	4	2	100	7.2
KBD1005	Mazda	F-V	257	24	22	47	55	125	4	1	100	11.36
KBD1006	Mazda	R-S	260	10	8	40	55	124	4	1	100	7.58
KBD1007	BMW	F-V	325	25	23.4	52.5	79	174	5	1	120	18.44
KBD1008	BMW	R-V	320	22	20.4	60.7	75	185	5	1	120	15.68
KBD1009	Mitsubishi	F-V	313.5	24	22.4	45.5	87	135	6	4	108	14.48
KBD1010	Toyota	R-V	312	18	16	68	106	210	6	8	139.5	12.68
KBD1011	Lexus, Toyota	F-V	312	32	30.5	69.5	115	171	5	0	144	18.96
KBD1012	Lexus, Toyota	R-V	329.5	18	16	102	110	230	5	8	150	17.74
KBD1013	Honda	R-S	262	9	7.5	48	64	150	5	5	114.3	7.18
KBD1021	Kia	F-V	258	24	22	49	72	143.5	4	4	114.3	12.04
KBD1022	Kia	R-S	261	10	8	40	72	143	4	4	114.3	7.52
KBD1024	Nissan	R-S	240	7	6	41	61	140	4	0	100	5.44
KBD1025	Ford, Mazda	F-V	256	24	22	24	86	155.75	6	0	108	10.68
KBD1027	Seat, Volkswagen	R-S	232	9	7	40	65	125	4	1	100	5.64
KBD1028	Honda	F-V	300	25	23	47.3	64	142	5	4	114.3	16.8
KBD1029	Honda	R-S	260	10	8	48	64	156	5	4	114.3	7.84
KBD1038	Daihatsu, Perodua	F-S	211	11	10	41	55	125	4	2	100	5.78
KBD1039	Honda	F-V	282	25	23	47	64	143	4	4	114.3	13.82
KBD1042	Kia	F-V	273	24	22	47	72	142	5	2	114.3	13.7
KBD1044	Mitsubishi	F-V	276	24	22.4	45	69	143	5	2	114.3	12.7
KBD1045	Mitsubishi	R-V	284	20	18.4	60	90	167	5	3	114.3	12.02
KBD1047	Toyota	F-V	255	25	24	49.5	55	131	5	2	100	10.52
KBD1048	Mazda	F-V	235	22	20	45	55	124	4	0	100	9.08
KBD1049	Audi, Volkswagen	F-V	323	30	28	59.5	68	142	9	1	112	21.5
KBD1050	Audi	R-V	269	22	20	47	68	135	5	0	112	10.14
KBD1051	Mercedes	F-V	276	22	19.4	35	67	144	5	1	112	11.16
KBD1052	Mercedes	R-S	258	8	7	55	67	164	5	1	112	6.6
KBD1053	Smart	F-S	280	9	8	38	58	153.5	3	1	112	8.36
KBD1055	Mitsubishi	R-S	260	10	8.4	41	90	155	5	2	114.3	7.36
KBD1057	Mitsubishi	F-V	276	24	22.4	45.2	69	165	5	8	114.3	11.88
KBD1062	Toyota	F-V	275	28	26	50.5	62	143	5	2	114.3	15.1
KBD1063	Mercedes	F-V	330	32	30	76	67	154	5	1	112	21.78
KBD1064	Mercedes	F-V	312	28	26	76	67	152	5	1	112	18.22
KBD1065	Mercedes	R-S	300	11	9.3	58	67	180	5	1	112	10.72
KBD1066	Mercedes	R-V	300	22	19.4	58	67	180	5	1	112	14.12
KBD1069	Porsche	F-V	318	28	26	67	98	157	5	4	130	34.4
KBD1070	Porsche	R-V	299	24	22	75	98	180	5	4	130	13.6
KBD1071	Volvo	F-V	286	26	23	51	68	140	5	5	108	14.32
KBD1072	Volvo	F-V	305	28	25	50	68	139	5	5	108	19.68
KBD1073	Volvo	R-S	288	12	10	65	68	178	5	5	108	11.2
KBD1075	Ford, Seat, Volkswagen	R-S	294	13.5	11.5	41	68	164	5	1	112	12.3
KBD1076	Volvo	R-S	277	12	10	71	68	160	5	5	108	10.5
KBD1077	Iveco	F-S	276	22	19	72.5	73	145	5	2	118	17.18
KBD1078	Iveco	R-S	276	16	13	69.5	73	144	5	2	118	13.62
KBD1079	Iveco	R-S	276	16	13	70	73	144	5	2	118	13.84
KBD1080	BMW	F-V	332	30	28	62	75	164	5	1	120	22.4
KBD1081	BMW	R-S	323	12	10.4	80	75	185	5	1	120	14.58
KBD1086	Honda	F-V	300	25	23	40	70	142	5	4	114.3	13.38
KBD1087	Honda	F-S	282	12	10	40	64	142.2	5	4	114.3	9.88
KBD1090	Hyundai, Kia	R-S	284	10	8.4	61	76	190	5	3	114.3	10.14
KBD1092	Mitsubishi	F-V	285	22	20.4	39	69	145	5	2	114.3	12.12
KBD1093	Suzuki	F-V	287	17	15	30	108	181	5	0	140	8.32
KBD1095	Toyota	R-S	269	9	8	55.7	55	173	5	3	100	8.14
KBD1096	Audi	F-V	320	30	28	46.3	68	141	9	1	112	20.92
KBD1097	Land Rover	F-V	297	25	22	91.5	70	162	5	1	120	17
KBD1100	Mitsubishi	R-S	262	9.5	8.4	60.2	90	168	5	0	114.3	8.6
KBD1101	Chrysler	F-V	280	23	21.4	39.2	61	132	5	0	100	13.86
KBD1102	Honda	F-V	282	28	26	48.2	64	160	5	4	114.3	14.38

KBD1103	Honda	R-S	260	9	8	47	64	157	5	4	114.3	6.88
KBD1105	Audi	R-S	255	10	8	53	68	144	5	0	112	11.68
KBD1106	Opel, Vauxhall	F-S	240	11	9	41	60	126	4	3	100	6.6
KBD1107	Opel, Vauxhall	F-V	240	20	18	41	60	125	4	3	100	8.54
KBD1108	Opel, Vauxhall	F-V	260	24	22	41	60	125	4	3	100	10.84
KBD1109	Honda	R-S	260	10	8	63.7	64	156.5	4	4	114.3	8.6
KBD1110	Chevrolet, Daewoo	F-V	256	24	22	47	60	140	4	1	114.3	11.2
KBD1112	Hyundai	F-V	276	26	24.4	47.8	69	145	5	2	114.3	13.02
KBD1113	BMW	F-V	324	30	28.4	74	79	149	5	1	120	20.12
KBD1114	Ford	F-V	276	24.5	22.1	42.8	82	136	5	0	100	12.64
KBD1115	Jeep	F-V	305	26	24.7	64	72	170	5	0	127	16.26
KBD1116	Jeep	R-S	305	10	8.5	75	72	194.5	5	0	127	12.5
KBD1117	Suzuki, Vauxhall	F-S	247	12	10	44.5	60	125	4	2	100	
KBD1118	Citroen, Peugeot	F-V	266	22	20	34.5	66	133	4	2	108	10.32
KBD1119	Citroen, Peugeot	F-V	283	26	24	34.5	66	133	4	2	108	14.2
KBD1120	Peugeot	R-S	247	9	7.4	35	71	132.75	4	2	108	6.6
KBD1121	Peugeot	F-V	283	26	24	48	71	133.5	5	2	108	14.42
KBD1122	Peugeot	F-V	308	32	30	43.5	71	181	5	2	108	19.54
KBD1123	Peugeot	R-S	290	10	8	51	71	185	5	3	108	22.46
KBD1124	Toyota	F-V	275	25	23	49.5	55	129	5	2	100	12.38
KBD1125	Mini (BMW)	F-V	276	22	20.4	43.7	64	150	4	1	100	11.42
KBD1126	Mini (BMW)	R-S	259	10	8.4	44	64	164	4	1	100	7.2
KBD1127	Opel, Vauxhall, Saab	F-V	308	25	22	42	70	139	5	3	110	16.86
KBD1128	MG	F-V	282	25	23	44	64	143	4	4	100	13.64
KBD1129	Land Rover	F-V	277	21	18	51	66	141	5	2	114.3	12.3
KBD1130	Ford, Jaguar	F-V	300	24	22	47	63.5	155	5	0	108	14.68
KBD1131	Ford, Jaguar	R-S	280	12	10	34	63.5	145	5	0	108	10.24
KBD1132	Nissan, Renault, Vauxhall	F-V	305	28	25	78	90	155	5	1	130	20.48
KBD1134	Mitsubishi	F-V	276	24	22.4	45	69	145	4	4	114.3	12.22
KBD1135	Nissan	F-V	238	18	16	46	59	130	4	0	100	7.94
KBD1136	Nissan	F-V	306	32	30	47	109	180	6	0	137	20.86
KBD1138	Toyota	R-S	291	12	10.5	68.75	62	190	5	3	114.3	12.22
KBD1139	Hyundai	F-V	257	24	22	45.7	69	142	4	2	114.3	11.5
KBD1140	Toyota	R-S	303	9	8	62	62	190	5	3	114.3	11.06
KBD1142	Audi, Skoda, Volkswagen	R-S	239	9	7	33.5	65	131	5	1	100	5.84
KBD1143	Honda	F-V	300	28	26	47	70	148	5	4	114.3	16.68
KBD1144	Honda	R-S	260	10	8	64	64	155.5	5	4	114.3	8.4
KBD1145	Nissan	R-S	277	10	9	45	68	154	4	0	114.3	8.92
KBD1146	Opel, Vauxhall	R-S	240	10	8	41	57	126	4	1	100	6.1
KBD1148	Citroen	R-S	275	14	12	62	71	138	4	2	108	11.56
KBD1149	Audi, Volkswagen	F-V	239	15	13	34.5	65	125	4	3	100	6.34
KBD1150	Audi	R-S	245	10	8	40	68	135	5	1	112	6.78
KBD1151	Audi, Skoda, Volkswagen	F-V	312	25	23	46	68	158	5	1	112	18.32
KBD1152	Audi, Volkswagen	R-S	255	12	10	40	68	144	9	1	112	8.12
KBD1153	Chrysler	F-V	281	28	25.3	38	73.5	145	5	0	114.3	14.54
KBD1154	Chrysler, Jeep	F-V	302	28	26.5	39	73.5	144	5	0	114.3	16.3
KBD1155	Chrysler	R-S	290	12.5	11.2	56	72	180	5	0	114.3	11.5
KBD1156	Ford, Seat, Volkswagen	F-V	300	26	22	56	68	145	5	1	112	16.66
KBD1157	Ford, Seat, Volkswagen	F-V	313	26	22	57	68	148	5	1	112	19.62
KBD1158	Lada	F-V	239	20	18	42.7	58.5	126	4	2	98	7.74
KBD1159	Lada	F-V	260	20	18.5	43	58.5	125	4	2	98	10.18
KBD1160	Mazda	F-V	273	24	22	48	72	143	5	3	114.3	13.56
KBD1161	Mercedes	F-V	345	32	30	76	67	203	5	1	112	25.86
KBD1162	Mercedes	R-V	315	22	19.4	59	67	180	5	1	112	15.46
KBD1163	Mercedes	F-V	360	32	30	85	67	155	5	3	112	30.32
KBD1165	Nissan, Renault, Vauxhall	R-S	305	12	10	67.5	90	169	5	1	130	13.02
KBD1166	Volkswagen	F-V	256	25	23	39.5	65	132	4	1	100	11.86
KBD1167	Renault	F-V	300	26	22.8	47.5	61	140	5	2	108	18.22
KBD1168	Fiat, Opel, Saab, Vauxhall	F-V	285	25	23	42	70	139	5	3	110	14.16
KBD1169	Opel, Saab, Vauxhall	F-V	302	28	25	45	70	139	5	3	110	18.22
KBD1170	Fiat, Opel, Saab, Vauxhall	R-S	278	12	10	41.4	65.5	148.8	5	3	110	9.36
KBD1171	Lexus	F-V	296	28	26	49.5	62	145	5	2	114.3	17.96
KBD1172	Audi	R-V	256	22	20	47.5	68	135	5	0	112	9.74
KBD1173	Lancia	F-V	305	28	26	45	59	139	5	5	108	17.08
KBD1174	Renault	F-V	305	28	26	44	61	134	5	2	108	16.16
KBD1175	Renault	F-V	280	24	22	47	61	140	5	2	108	14.82
KBD1177	Renault	F-V	324	28	25	47	61	150	5	2	108	22.68
KBD1179	Toyota	F-V	296	28	26	49.3	62	156	5	2	114.3	16.02
KBD1181	Renault	R-S	274	11	9.5	83	52.4	62.4	4	0	100	14.94
KBD1183	Ford	F-V	324	28	26	52.7	63.5	152	4	0	108	17
KBD1184	Citroen, Peugeot	R-S	280	16	14	82	72	172	5	0	118	15.58

KBD1185	MG	F-V	304	24	22	39	58	181	4	2	95	13.82
KBD1186	Honda	F-V	282	23	21	47.5	64.3	141.5	5	4	114.3	13.18
KBD1187	Honda	R-S	282	12	10	58.5	64	170	5	5	114.3	10.22
KBD1188	Ford, Mazda	F-V	278	24	22	47	72	142	5	0	114.3	12.92
KBD1189	Hyundai	F-V	241	19	17	52	63	126	4	2	100	9.48
KBD1190	Kia	F-V	257	24.5	22.4	47	69	149	4	2	114.3	11.78
KBD1191	Kia	F-V	235	22	20	45	55	125	4	2	100	8.62
KBD1193	Mitsubishi	R-V	300	22	20	58	90	168	5	3	114.3	14
KBD1194	Mazda	F-V	274	24	22	25	93	166.5	6	0	116	12.28
KBD1195	Mitsubishi	F-V	290	26	24.4	46.5	94	171	6	2	139.7	13.66
KBD1196	Mitsubishi	R-V	300	22	20.4	72.3	94	199	6	2	139.7	13.86
KBD1197	Nissan	F-V	280	28	26	49	68	144	5	0	114.3	14.88
KBD1199	Nissan, Renault	R-V	292	16	14	62	68	172	5	1	114.3	10.9
KBD1202	Subaru	F-V	326	30	28	53	58	149	5	2	100	19.02
KBD1203	Subaru	R-V	316	20	18	67.5	58	190	5	2	100	15.9
KBD1204	Subaru	R-S	266	10	8.5	67	58	170	5	2	100	9.44
KBD1205	Toyota	F-V	275	28	26	50	55	132	5	2	100	14
KBD1206	Toyota	R-S	288	10	9	65	55	170	5	3	100	10.68
KBD1207	Toyota	F-V	255	25	23	49.3	55	129	4	2	100	10.36
KBD1208	Toyota	F-V	255	25	23	49.3	55	129	4	2	100	10.36
KBD1209	Toyota	F-V	275	25	23	49.3	55	130.8	4	0	100	14.62
KBD1210	Toyota	R-V	263	16	15	41.2	55	168	4	6	100	8.06
KBD1211	Toyota	F-V	275	25	23	49.5	62	141	5	2	114.3	13.02
KBD1213	Suzuki	F-V	310	22	20	29	108	180	5	2	140	13.04
KBD1214	Ford	F-V	300	24	22.2	44.5	63.5	156	4	0	108	15.12
KBD1215	Alfa Romeo, Fiat	F-V	281	26	24.2	43.5	59	127	4	4	98	13.66
KBD1216	Alfa Romeo	R-S	276	10	9	45.5	59	138	5	5	98	9.08
KBD1217	BMW	F-V	324	30	28.4	81	79	165	5	1	120	22.04
KBD1218	BMW	R-V	324	20	18.4	67	79	185	5	1	120	16.98
KBD1219	BMW	F-V	348	30	28.4	81	79	191	5	1	120	22.5
KBD1220	BMW	R-V	345	24	22.4	67	79	185	5	1	120	20.36
KBD1221	Citroen, Fiat, Lancia, Peugeot	F-V	285	28	26	43.5	59	126.5	5	1	98	15.92
KBD1222	Citroen, Fiat, Lancia, Peugeot	R-S	272	12	10	28	59	134	5	1	98	8.96
KBD1223	Ford	R-S	281	10	8.8	33	63.5	155	4	0	108	8.32
KBD1224	Honda, MG	R-S	260	10	8	49	61	155.5	4	4	100	8.06
KBD1225	Honda	F-V	240	21	19	39	61	125.5	4	4	100	7.96
KBD1226	Kia	F-V	280	26	24	49	72	143.5	4	2	114.3	14.24
KBD1229	Nissan	R-S	278	10	8	45	68	154	5	0	114.3	9.04
KBD1230	Nissan, Renault	F-V	260	22	19.8	44	61	125	4	2	100	11.72
KBD1231	Nissan, Renault, Vauxhall	F-V	305	28	26	49.5	72	154	5	1	118	19.42
KBD1233	Porsche, Volkswagen	F-V	330	32	30	68.5	85	174	5	1	130	44.44
KBD1234	Audi, Porsche, Volkswagen	F-V	350	34	31.8	68.5	85	185	5	1	130	48.92
KBD1235	Audi, Porsche, Volkswagen	R-V	330	28	26	73.5	85	157	5	2	130	17.82
KBD1236	Volvo	F-V	336	30	27	51.5	68	150	5	5	108	23.04
KBD1237	Volvo	F-V	316	28	25	50.5	68	144	5	5	108	18.56
KBD1238	Volvo	R-V	308	20	18	65	68	154	5	5	108	15.02
KBD1239	Mercedes	F-V	295	28	25.4	54.5	67	165	5	1	112	15.88
KBD1240	Mercedes	F-V	312	28	25.4	64.5	67	154	5	1	112	18.38
KBD1241	Mercedes	R-S	300	10	8	69	67	180	5	1	112	11.08
KBD1242	Mercedes	R-V	300	22	19.4	65	67	180	5	1	112	14.88
KBD1244	Ford	F-V	278	24	22	44.5	63.5	143	5	0	108	14.4
KBD1245	Kia	F-V	302	28	26	54.5	96	166	5	2	139.6	16.96
KBD1247	Skoda, Volkswagen	F-V	239	18	16	35	65	125	5	1	100	7.86
KBD1248	Mercedes	F-V	270	22	19	35.5	67	145	5	0	112	10.16
KBD1249	Hyundai	F-V	294	26	24	47.2	69	144	5	2	114.3	14.76
KBD1250	Kia, Hyundai	F-V	280	26	24.4	47	69	143.5	5	2	114.3	14.2
KBD1251	Hyundai	R-S	258	10	8	45.3	76	154	5	5	114.3	8.16
KBD1252	Hyundai	F-V	258	24	22	47	68	142	4	0	114.3	11.02
KBD1253	Lexus	R-S	288	10	9	60	62	170	5	0	114.3	9.34
KBD1254	Lexus	F-V	319	28	26	49	62	178	5	0	114.3	16.6
KBD1255	Lexus	R-S	288	10	9	70	62	190	5	1	114.3	10.2
KBD1256	Toyota	R-S	269	9	8	56	55	173	4	3	100	7.24
KBD1258	Ford, Volvo	F-V	278	25	23	48.5	63.5	140	5	0	108	14.92
KBD1259	Audi, Volkswagen	R-V	280	22	20	42.4	68	158	5	2	112	12.4
KBD1260	Audi, Volkswagen	F-V	360	34	31	60	68	139.6	5	2	112	28.66
KBD1261	Audi, Volkswagen	R-V	310	22	20	42.4	68	178	5	2	112	13.8
KBD1262	BMW	F-V	310	24	22.4	77	79	161	5	1	120	17.42
KBD1263	BMW	F-V	324	30	28.4	77	79	165	5	1	120	21.04
KBD1264	BMW	R-V	320	20	18.4	63	75	185	5	1	120	15.42
KBD1265	BMW	F-V	374	36	34	81	79	187	5	1	120	31.94
KBD1266	BMW	R-V	370	24	22.4	67	79	185	5	1	120	22.64

KBD1267	Ford	R-S	278	11	9	54	63.5	150	5	0	108	10.32
KBD1268	Mazda	F-V	282.5	25	23	48.5	72	142	5	3	114.3	15.54
KBD1269	Mazda	R-S	280	10	8	40	72	142.75	5	3	114.3	8.82
KBD1270	Mercedes	F-V	345	30	28	46.5	67	154	5	1	112	24.88
KBD1271	Mercedes	F-V	330	32	29.4	64.5	67	154	5	1	112	20.86
KBD1272	Mercedes	F-V	360	36	34	64.5	67	154	5	1	112	32.44
KBD1273	Mercedes	R-V	330	26	24	68	67	180	5	1	112	21.1
KBD1274	Mercedes	F-V	360	36	34	76	67	154	5	1	112	33.4
KBD1275	Mercedes	R-V	330	26	24	61	67	180	5	2	112	19.88
KBD1276	Mercedes	R-V	330	26	24	58	67	180	5	1	112	13.38
KBD1277	Mercedes	F-V	312	28	26	64.5	67	154	5	1	112	17.92
KBD1278	Mercedes	F-V	330	32	30	64.5	67	154	5	1	112	20.36
KBD1279	Opel, Suzuki, Vauxhall	F-V	253	17	15	49	60	153	4	4	100	8.4
KBD1280	Opel, Vauxhall	F-V	280	25	22	43	60	139	4	3	100	13.5
KBD1281	Opel, Vauxhall	R-S	264	10	8	42	57	145	4	1	100	8
KBD1282	Opel, Saab, Vauxhall	F-V	314	28	25	45	70	139	5	3	110	19.62
KBD1283	Fiat, Opel, Saab, Vauxhall	R-V	292	20	18	42	65.5	163.5	5	3	110	10.88
KBD1285	Renault	R-S	240	8	7	80.5	55		4	0	100	9.36
KBD1286	Toyota	R-S	279	9	8	56	55	172	4	3	100	8.82
KBD1287	Toyota	R-S	258	9	8	55.8	55	172	4	3	100	6.9
KBD1288	Audi, Skoda, Volkswagen	R-S	256	12	10	48	65	140	9	1	112	8.72
KBD1289	Volkswagen	F-V	308	29.5	25.5	55.5	76	154.5	5	1	120	21
KBD1290	Volkswagen	F-V	333	32.5	28.5	56	76	154.5	5	1	120	23.94
KBD1291	Volkswagen	R-V	294	22	19.5	44.5	76	155	5	1	120	14
KBD1292	Audi, Seat, Skoda, Volkswagen	F-V	288	25	22	50	65	144	9	1	112	15.76
KBD1293	Audi, Seat, Skoda, Volkswagen	F-V	280	22	19	50	65	144	9	1	112	11.72
KBD1294	Audi, Seat, Skoda, Volkswagen	R-S	255	10	8	51	65	140	9	1	112	7.74
KBD1295	Volkswagen	R-V	314	22	18	75.5	76	185	5	1	120	16.02
KBD1296	Ford, Volvo	F-V	300	25	23	48.5	63.5	140	5	0	108	16.28
KBD1297	Ford	R-S	265	11	9	41	63.5	154.5	5	0	108	8.86
KBD1298	Ford, Volvo	R-S	280	11	9	41	63.5	154	5	0	108	9.68
KBD1299	Renault	R-S	274	11	9.5	82.2	52	62	5	0	108	15.64
KBD1300	Citroen, Fiat, Lancia, Peugeot	F-V	310	32	30	43.5	59	136	5	0	98	18.7
KBD1302	BMW	F-V	284	22	20.4	73	79	152	5	1	120	13.68
KBD1303	BMW	F-V	292	22	20.4	73	79	152	5	1	120	14.24
KBD1304	BMW	R-V	300	20	18.4	66.2	75	161	5	1	120	13.66
KBD1305	MG	F-V	325	25	22.8	35	64	175.8	5	1	100	17.04
KBD1306	MG	R-V	276	19	16.4	62	64	160.5	5	1	100	11.26
KBD1307	Daihatsu	F-V	250	18	17	47	56	129	4	3	100	8.82
KBD1308	Toyota	F-V	276	25	23	49.2	55	131	5	2	100	14.42
KBD1309	Toyota	R-S	271	10	9	61	55	151	5	2	100	9.32
KBD1310	LDV	F-V	275	24	22	63	88.5	126	5	0	104.8	14
KBD1311	Citroen, Fiat, Peugeot	R-S	280	16	14.2	82	79	172	5	5	130	15.52
KBD1312	Ford	F-V	289	28	26	70.3	98	164	6	1	139.7	17.74
KBD1313	Renault	F-V	288	28	26	44	61	132.5	5	2	108	15.4
KBD1314	Peugeot	F-V	283	26	24	48	71	133	5	2	108	14.4
KBD1315	Citroen, Peugeot	R-S	290	12	10	35	71	151	5	2	108	10.44
KBD1316	Fiat, Ford	F-V	240.5	20	18.2	40.5	59	126	4	4	98	8.44
KBD1317	Citroen, Peugeot	F-V	330	30	28	48	71	172	5	3	108	22.58
KBD1318	Land Rover	R-V	350	20	18.5	59	79	210	5	2	120	18.82
KBD1319	Land Rover	F-V	338	30	27	62.5	79	166	5	1	120	23.14
KBD1320	Mazda	F-V	278	25	23	48.5	72	140	5	0	114.3	15
KBD1321	Mazda	F-V	300	25	23	48.5	72	140	5	0	114.3	17.28
KBD1322	Renault	F-V	300	24	21.8	44	61	140	4	2	100	17.06
KBD1323	Toyota	F-V	277	26	24	49.3	55	130	5	2	100	13.76
KBD1324	Toyota	F-V	295	26	24	49.3	55	141	5	2	100	15.58
KBD1325	Toyota	R-S	280	10	9	56	55	173	5	3	100	9.14
KBD1328	Mazda	R-S	280	11	9	41	72	159	5	0	114.3	11.08
KBD1329	Renault	R-S	240	8	7	80.8	55	52.3	4	0	100	8.8
KBD1330	Audi, Seat, Skoda, Volkswagen	F-V	345	30	27	49.5	65	142	9	1	112	25.12
KBD1332	BMW	F-V	325	25	23.5	62.2	75	174	5	1	120	18.84
KBD1334	BMW	R-V	320	22	20.4	80	75	185	5	1	120	16.52
KBD1336	Honda	F-V	300	25	23	47.3	64	142	5	4	114.3	16.8
KBD1337	Honda	R-S	259	10	8	49	64	140	5	4	114.3	7.44
KBD1338	Hyundai	F-V	234	18	16	51	63	126.3	4	2	100	8
KBD1339	Hyundai	F-V	255	19	17	48	62	126	4	2	100	10.14
KBD1340	Hyundai, Kia	R-S	262	10	8	64	62.5	168	4	3	100	9.4
KBD1341	Jeep	F-V	288	28	26	65	72	158	5	0	114.3	15.48
KBD1342	Hyundai, Kia	F-V	241	18	16	49	62.5	126	4	2	100	7.9
KBD1343	Hyundai, Kia	R-S	234	10	8.4	37.5	62.5	142.4	4	2	100	6.08
KBD1344	Land Rover	F-V	317	30	27	62	79	164.9	5	1	120	20.56

KBD1345	Mercedes	F-V	300	28	25	58.5	67	152.5	5	1	112	17.44
KBD1346	Mercedes	R-S	296	10	8	57.5	67	186	5	1	112	10.26
KBD1347	Renault	F-V	308	28	25.4	47	61	140	5	2	108	19.92
KBD1348	Suzuki	F-V	257	17	15	49.2	60	151	4	2	100	9.2
KBD1349	Toyota	F-V	338	28	26	67.5	108	172	6	0	139.7	18.34
KBD1353	Audi, Seat, Skoda, Volkswagen	F-V	312	25	22	49.5	65	144	9	1	112	17.52
KBD1354	Audi, Seat, Skoda, Volkswagen	R-S	282	12	10	48	65	159	9	1	112	10.08
KBD1355	Subaru	R-V	290	18	16	67.5	58	170	5	2	100	11.72
KBD1357	Nissan	F-V	252	20	18	45	61	144	4	2	100	9.82
KBD1358	Opel, Vauxhall	F-V	280	25	22	43	60	139	4	3	100	13.5
KBD1361	BMW	R-S	280	10	8.4	65	75	161	5	1	120	9.98
KBD1362	BMW	F-V	330	24	22.4	73	79	174	5	1	120	18.7
KBD1363	Land Rover	R-S	298	14	13	59	102	160	5	5	127	14.14
KBD1365	Honda	R-S	282	9	7.5	58.5	64	170	5	5	114.3	9.1
KBD1366	Citroen, Peugeot, Toyota	F-V	247	20	18	35.25	55	129	4	3	100	8.86
KBD1367	Mazda	F-V	323	24	22	45	72	144	5	3	114.3	17.42
KBD1368	Honda	F-V	260	23	21	45	64	141	4	4	100	11.14
KBD1369	Fiat, Opel, Vauxhall	F-V	257	22	20	40.5	60	127	4	4	100	10.84
KBD1371	Fiat, Opel, Vauxhall	F-V	284	22	20	43.25	60	127	4	4	100	12.76
KBD1372	Toyota	R-S	240	9.7	8	59.5	55	131	4	2	100	7.54
KBD1373	Honda	F-V	280	25	23	47.25	64	142	5	4	114.3	14
KBD1374	Suzuki	F-V	231	17	15	44	60	125	4	2	100	7.18
KBD1375	BMW	F-V	356	36	34	62	75	158	5	1	120	28.22
KBD1376	Alfa Romeo	F-V	305.3	28	26	39.7	70	138	5	5	110	15.74
KBD1377	Alfa Romeo	F-V	330	28	26	39.5	70	151	5	5	110	19.94
KBD1378	Alfa Romeo	R-S	278	12	10	43.25	70	139	5	5	110	9.82
KBD1379	Audi, Alfa Romeo	F-V	314	25	23	59.5	68	144	5	1	112	18.56
KBD1380	Audi	F-V	321	30	28	59.5	68	144	5	1	112	22.08
KBD1381	Audi	R-S	302	12	10	49.2	68	138	9	1	112	11.3
KBD1382	BMW	F-V	300	24	22.4	73.25	79	151.5	5	1	120	16.32
KBD1383	BMW	R-S	295.8	10.5	8.9	65.25	75	160.75	5	1	120	9.88
KBD1384	Ford	F-V	278	25	23	45	63.5	140	4	0	108	14.58
KBD1385	Ford	R-S	280	10	8.9	42.5	63.5	155	4	0	108	8.82
KBD1386	Ford, Volvo	F-V	320	25	23	48.5	63.5	148	5	0	108	20.14
KBD1387	Ford	F-V	300	28	25	54.5	93	136	5	0	111.5	18
KBD1388	Ford	F-V	280	28	25	54.5	93	136	5	0	111.5	15.58
KBD1389	Opel, Vauxhall	R-V	286	20	18	61	68.5	160	5	5	110	12.36
KBD1390	Honda	R-S	281.5	9	7.5	61	64	148	5	5	114.3	8.58
KBD1392	Honda	F-V	282	23	21	47.5	64.3	141.5	5	4	114.3	13.18
KBD1393	Hyundai	F-V	241	19	17	48	62	125.5	4	2	100	4.66
KBD1394	Hyundai	F-V	280	27	25.4	43	87	176	6	0	108	13.54
KBD1395	Kia	F-V	275	26	24	47.5	69	141.5	4	4	114.3	12.8
KBD1396	Kia	F-V	254	24	22	50.5	55	140.6	4	4	100	10.8
KBD1397	Land Rover	F-V	344	30	28.4	76	79	173	5	1	120	24.64
KBD1398	Mercedes	F-S	276	12	10	44.5	67	145	5	1	112	9.06
KBD1399	Mercedes	F-V	276	22	19.4	44.5	67	144.9	5	1	112	12.06
KBD1400	Mitsubishi, Smart	F-V	256	24	21.5	45.6	69	139	4	0	114.3	10.46
KBD1401	Nissan	F-V	300	28	26	38	100	184	6	0	124	16.98
KBD1402	Citroen, Peugeot	F-V	301.5	26	24.8	34	66	133	4	2	108	18.1
KBD1404	Subaru	F-V	326	30	28	53	58	149	5	2	114.3	18.92
KBD1405	Suzuki	F-V	251.8	20	18	40	60	127.5	4	4	100	9.36
KBD1406	Toyota	F-V	295	26	24	49.25	62	141	5	2	114	16.06
KBD1407	Subaru	R-V	316	20	18	67.5	58	190	5	2	114.3	15.9
KBD1408	Kia	F-V	274	26	24	48.5	72	141	5	2	114.3	13.46
KBD1409	LDV	F-V	294	24	22.4	70.5	80	158	5	1	130	16.58
KBD1410	Nissan	F-V	320	28	26	38.35	68	175	6	0	114.3	19.04
KBD1412	BMW	R-V	336	22	20.4	67.2	75	171.5	5	1	120	17.8
KBD1413	Nissan, Renault, Vauxhall	R-S	280	12	10	102.5	64.5	68.5	5	0	118	19.76
KBD1414	Land Rover	R-V	325	20	17	59.5	79	210	5	2	120	16.02
KBD1415	Jaguar	F-V	320	30	28.4	43	71	143.5	5	0	108	18.38
KBD1417	Subaru	R-S	290	10	8.5	67.4	58	170	5	2	100	10.36
KBD1418	Renault	R-S	300	11	9.5	82	52.5	62.6	5	0	108	15.38
KBD1419	Ford	R-S	280	16	13	69	96	120	5	0	160	17.32
KBD1420	Ford	R-S	280	16	13	16.3	107.5	144	10	0	124	11.56
KBD1421	Mercedes, Volkswagen	F-V	300	28	25	68.5	85	155	6	1	130	19.22
KBD1422	Mercedes, Volkswagen	R-S	298	16	14	71	85	180	6	1	130	15.36
KBD1423	Mercedes, Volkswagen	R-V	303	28	25	93	120	172	6	0	145	20.68
KBD1424	Land Rover	R-S	354	12	10	75	79	210	5	2	120	18.86
KBD1426	Honda	F-V	261.5	21	19	47	64	141.5	5	4	114.3	10.42
KBD1427	Mini (BMW)	F-V	280	22	20.4	44	64	149.5	4	1	100	12.08
KBD1428	Mini (BMW)	R-S	259	10	8.4	44	64	162.7	4	1	100	7.42

KBD1429	Ford, Land Rover, Volvo	F-V	300	28	26	52	63.5	140	5	1	108	17.54
KBD1430	Ford, Land Rover	R-S	302	11	9	50.7	63.5	177.5	5	1	108	10.92
KBD1431	Mazda	F-V	270	22	20	46	55	125	4	1	100	12.18
KBD1432	Opel, Vauxhall	F-V	321	28	25	44	70	142	5	3	110	19.48
KBD1433	Hyundai	F-V	303	28	25	43	87	176	6	0	108	17.54
KBD1434	Iveco	F-S	290	22	19	110	64	122.5	6	0	170	15.57
KBD1435	Toyota	F-V	291	25	23	66	100	155	6	0	127	13.78
KBD1436	Rover	F-V	231	20	18	41	66	135	4	4	108	7.32
KBD1438	Citroen, Fiat, Peugeot	F-V	303	28	26	48	71	146	5	3	108	19.68
KBD1439	Citroen, Fiat, Peugeot	F-V	280	28	26	48	71	152	5	3	108	8
KBD1440	Citroen, Fiat, Peugeot	R-S	290	14	12	49	71	143.5	5	2	108	11.44
KBD1441	Citroen, Fiat, Peugeot	F-V	280	28	25.9	71.5	73	142	5	5	118	15.4
KBD1442	Citroen, Fiat, Peugeot	R-S	280	16	14	80	72	172	5	5	118	14.4
KBD1443	Citroen, Fiat, Peugeot	R-S	280	16	14	80	79	172	5	5	130	14.2
KBD1444	Fiat, Suzuki	F-V	280	22	20	47	62	146	5	4	114.3	11.8
KBD1445	Honda	F-V	258	21	19	39	64	141	4	4	100	9.68
KBD1446	Hyundai, Kia	F-V	256	22	20	46.5	62.2	126	4	2	100	10.22
KBD1447	Kia	F-V	300	28	26	54.1	96.4	163.3	6	2	139.7	17.24
KBD1448	Kia	R-S	324	12	10	69.5	96	210	6	3	139.7	14.32
KBD1449	Renault	R-S	280	12	10	45	61	148.5	4	2	100	10.2
KBD1450	Renault	F-V	300	26	24	44	61	139.6	5	2	108	
KBD1451	Saab	R-V	300	20	18.4	69.1	65.5	160	5	2	110	12.32
KBD1452	Toyota	F-V	258	22	20	46.2	55	131	4	2	100	9.9
KBD1453	Toyota	R-S	278	9	7	25.25	55	147	4	2	100	6.62
KBD1454	Toyota	R-S	290	10	8.5	57	62	180	5	3	114.3	10.2
KBD1455	Toyota	F-V	296	28	25	49.3	62	145	5	2	114.3	14.8
KBD1456	Toyota	R-S	281	12	10.5	55	62	173	5	3	114.3	9.64
KBD1457	Opel, Vauxhall	F-V	278	26	23	43.2	70	137	5	3	110	12.72
KBD1458	BMW	R-S	280	10	9	75	75	161	5	1	120	9.4
KBD1459	BMW	R-V	294	19	17.4	74.5	75	161	5	1	120	13.72
KBD1460	Daewoo, Ssangyong	F-V	294	26	24	32.6	88	184	6	0	109	15.2
KBD1462	Chevrolet, Daewoo	R-S	258	10.6	9.5	57.5	60	168	4	2	114.3	9
KBD1463	Ford, Land Rover, Volvo	F-V	315.7	28	26	52	63.5	144	5	1	108	19.82
KBD1464	Honda	R-S	260	9	8	42	64	140.5	5	4	114.3	6.6
KBD1465	Honda	R-S	304	9	8	61	64	200	5	5	114.3	9.8
KBD1468	Hyundai	F-V	280	26	24	47.5	69	141.5	4	2	114.3	13.8
KBD1469	Mercedes	R-S	258	8	7	57.2	67	164	5	1	112	6.44
KBD1471	Audi, Skoda, Volkswagen	R-V	310	22	20	48	65	168.5	9	1	112	13.72
KBD1473	Land Rover	R-S	302	12	10.5	66	63.5	185	5	2	108	12.8
KBD1474	Land Rover	R-V	302	20	18	66	63.5	185	5	2	108	14.4
KBD1475	Land Rover	R-V	354	20	17	75	79	210	5	2	120	18.26
KBD1476	Nissan	F-V	320	28	26	49.2	68	144.5	5	1	114.3	19.6
KBD1477	Nissan	R-V	308	16	14	62.1	68	190	5	1	114.3	11.8
KBD1480	Land Rover	F-V	360	30	27	62	79	175	5	1	120	23.92
KBD1481	Fiat	R-S	264	10	9	40.5	60	137	4	4	100	7.18
KBD1482	Mercedes	F-V	288	25	22.4	44.4	67	154.3	5	1	112	12.74
KBD1483	Alfa Romeo	F-V	330	32	30	44.75	59	149	5	5	98	20.52
KBD1484	Fiat, Opel, Vauxhall	F-S	257	12	10	40.5	60	127	4	4	100	8.08
KBD1485	Mazda	F-V	290	22	20	45	72	142	5	3	114	12.6
KBD1486	Chrysler	F-V	345	28	26.5	54.7	72.5	185.5	5	0	115	19.9
KBD1488	Nissan, Renault	F-V	296	26	24	44	68	146.3	5	0	114.3	14.28
KBD1489	Nissan	R-S	291	9	7.5	62	68	146	5	1	114.3	9.4
KBD1490	Seat	F-V	323	28	26	34.2	65	146	5	5	100	17.48
KBD1500	Renault	R-S	274	11	9	83	52.4	62.4	4	0	100	13
KBD1501	Nissan	F-V	250	22	20	50	68	140	5	2	114.3	10.6
KBD1502	Hyundai, Kia	R-S	262	10	8.5	61	76	168	4	3	114.3	8.6
KBD1506	Ford	F-V	258	23	21	44	63.5	135	4	1	108	11.4
KBD1507	Honda	R-S	239	9	8	47.65	61	151	4	4	100	6.2
KBD1508	Jaguar	F-V	326	30	28	46	71	160.5	5	0	108	20.4
KBD1509	Mazda	F-V	258	23	21	44	55	135	4	1	100	11.4
KBD1510	Hyundai, Kia	F-V	280	26	24.4	47	69	143.5	5	2	114.3	14.2
KBD1512	Mazda	R-S	265	11	9	41	72	153.5	5	0	114.3	8.16
KBD1513	Kia	R-S	258	10	8	41.5	76	154	4	4	114.3	7.4
KBD1514	Mitsubishi, Smart	R-S	250	10	8	38.5	69	146.5	4	2	114.3	6.3
KBD1515	Renault	R-S	238	8	7	74.7	52.39	49.1	4	0	100	8.8
KBD1516	Jaguar	R-V	326	20	18	38	64.5	160.5	5	0	108	13.6
KBD1517	Audi	F-V	320	29.8	28	52.1	68	153.7	5	1	112	19.4
KBD1518	Audi	F-V	345	29.3	28	51.8	68	153.5	5	1	112	21.4
KBD1519	Audi	R-S	300	12	10	36.2	68	153.6	5	1	112	10.54
KBD1520	Audi	R-V	330	22	20	36.2	68	154.2	5	1	112	15.24
KBD1521	Audi	R-S	288	12	10	35.8	68	162	5	1	112	10

KBD1522	Mazda	F-V	276	28	26	58	72	143	5	1	114.3	15.78
KBD1523	Mazda	R-V	286	18	16	57	72	190	5	2	114.3	10.82
KBD1524	BMW	F-V	332	30	28.4	62	75	153	5	1	120	22.4
KBD1525	BMW	F-V	348	30	28.4	62	75	154	5	1	120	24.2
KBD1526	BMW	F-V	365	36	34.4	62	75	168	5	1	120	28.2
KBD1527	BMW	R-V	320	20	18.4	78.5	75	185	5	1	120	15.2
KBD1528	BMW	R-V	345	24	22.4	78.5	75	185	5	1	120	18.6
KBD1530	BMW	F-V	348	30	28.4	73.2	79	164	5	1	120	22.4
KBD1532	Citroen, Fiat, Peugeot	F-V	300	32	30	73.5	80	160.6	5	2	130	18.6
KBD1533	Citroen, Fiat, Peugeot	R-S	300	16	14	80	79	172	5	5	130	15.4
KBD1534	Dacia, Renault	F-S	259	12	10.6	41	61	130	4	2	100	8.2
KBD1535	Iveco	F-V	290	28	25	46	64	125	9	0	95	17.2
KBD1536	Iveco	F-V	300	28	25	74.4	78	156	6	1	125	17.4
KBD1537	Iveco	R-V	294	24	21	87.6	84	142	8	0	108	17
KBD1539	Renault	F-V	312	28	26	63	61	150.8	5	2	108	16
KBD1541	Hyundai, Kia	R-S	262	10	8.4	61.1	76	152	5	3	114.3	7.8
KBD1542	Hyundai, Kia	F-V	321	28	26.4	49.1	69	143	5	2	114.3	20.4
KBD1543	Hyundai	R-S	302	11	9.4	71.5	59	143	5	2	114.4	13
KBD1544	Hyundai	F-V	300	28	26	47	69	143	5	2	114.4	17.42
KBD1545	Hyundai	R-S	284	10	8.4	54.3	76	164.1	5	3	114.4	9
KBD1549	BMW	F-V	330	24	22.4	73.2	79	163.6	5	1	120	19.8
KBD1550	Mercedes	F-V	288	25	22.4	64.5	67	154.2	5	1	112	14.2
KBD1551	Mercedes	F-V	295	28	26	64.5	67	154	5	1	112	16.6
KBD1552	Mercedes	F-V	295	28	25.4	64.4	67	154.5	5	1	112	17
KBD1553	Mercedes	R-S	278	9	7.3	57.7	67	164	5	1	112	8.2
KBD1554	Mercedes	R-S	300	10	8.3	57.7	67	164	5	1	112	10
KBD1555	Mini (BMW)	F-V	294	22	20.4	44.2	64.15	150	4	1	100	12.34
KBD1556	Mitsubishi	F-V	276	26	24.4	45.5	69	145	4	2	114.3	12.6
KBD1557	Mitsubishi	F-V	254	24	22	40	87	133	6	0	108	9.6
KBD1558	Mitsubishi	F-V	295	28	26.4	46.5	94	171	6	2	139.7	13.54
KBD1559	Nissan	F-V	324	30	28.4	49	68	152	5	1	114.3	18.5
KBD1560	Nissan	R-V	322	22	20.2	62	68	172	5	1	114.3	16.34
KBD1562	Mazda	F-V	320	25	23	45.9	72	142.9	5	3	114.3	18.8
KBD1564	Mazda	R-S	314	11	9	40.9	72	142.8	5	3	114.3	10.6
KBD1568	Suzuki	F-V	295	25	23	49	62	150	5	2	114.3	13.6
KBD1569	Toyota	F-V	273	26	24	49.2	62	142	5	2	114.3	13.2
KBD1570	Toyota	R-S	270	10	8	36.7	62	155	5	2	114.3	7.4
KBD1571	Toyota	R-S	280	10	9	59	62	173	5	3	90	9.32
KBD1573	Chevrolet, Vauxhall	F-V	296	29	27.4	51.5	70.7	154	5	1	115	17.8
KBD1574	Chevrolet, Vauxhall	R-S	303	20	18.4	71.7	70.7	190	5	2	115	14.58
KBD1575	Volvo	R-S	302	11	9	40.7	63.6	147.5	5	1	108	10
KBD1576	Lexus	F-V	296	28	26	49.3	62	149	5	2	114.3	14.58
KBD1577	Hyundai, Kia	R-S	262	10	8.4	61	76	168	5	3	114.3	8.46
KBD1578	LDV	F-V	278	24	22	72	72	146	5	1	118	15.16
KBD1579	Opel, Vauxhall	F-V	296	30	27	51	67.4	160	5	1	120	17.24
KBD1580	Opel, Vauxhall	R-S	292	12	10.5	48	67.4	172	5	1	120	11
KBD1581	Opel, Vauxhall	F-V	321	30	27	50.9	67.4	160	5	1	120	19.8
KBD1582	Kia	F-V	274	28	26	50.6	72	140.6	5	2	114.3	15
KBD1583	Audi	F-V	314	25	23	52	68	154	5	1	112	16.8
KBD1584	Isuzu	F-V	280	27	25.6	40	88	175.2	6	0	109	13.6
KBD1586	Suzuki	F-V	272	22	20	40	60	150	4	0	100	5.2
KBD1587	Citroen, Peugeot	F-V	340	30	28	34.3	71	133	4	2	108	21
KBD1588	Nissan	F-V	260	22	20	43.9	61	129.5	4	0	100	10.14
KBD1589	Volvo	F-V	320	28	25	50	68	151	5	5	108	17.32
KBD1590	BMW	F-V	348	30	28.4	77	79	188	5	1	120	22.6
KBD1591	BMW	R-V	345	24	22.4	63	75	185	5	1	120	19.3
KBD1592	BMW	R-V	324	22	20.4	77	75	185	5	1	120	16.6
KBD1593	BMW	R-V	324	20	18.4	80.2	75	185	5	1	120	15.2
KBD1594	Mercedes	F-V	284	22	19	72	85	156.3	5	1	130	13.8
KBD1595	Alfa Romeo	R-V	292	22	20	43.2	70	139	5	5	110	12.6
KBD1596	Audi, Volkswagen	F-V	334	32	30	35	65	146	9	1	100	41.2
KBD1597	Audi	F-V	340	30	28	49.6	65	140	5	1	112	20.8
KBD1598	Audi	R-S	286	12	10	58.4	65	160	5	1	112	10.2
KBD1599	Audi	R-V	310	22	20	58.4	65	140	5	1	112	13.6
KBD1600	Mazda	R-S	302	11	9	41	72	152	5	0	114.3	9.8
KBD1601	Honda	F-V	293	28	26	47	64	154	5	4	114.3	16
KBD1602	Honda	R-S	302	10	8	61	64	200	5	5	114.3	9.88
KBD1603	Nissan	F-V	295	28	26	38.5	68	161	6	0	114.3	15.8
KBD1604	Nissan	R-V	308	18	16	63	68	190	6	1	114.3	12.28
KBD1605	Mercedes	F-V	280	25	22.4	52.2	67	144.8	5	1	112	13.2
KBD1606	Subaru	R-S	274	10	8.5	65.5	58	170	5	2	100	9.5

KBD1607	Chrysler, Dodge, Jeep, Mitsubishi	F-V	294	26	24.4	46	69	145	5	0	114.3	13.68
KBD1608	Dodge, Jeep	R-S	262	10	8	60	80	168	5	1	114.3	8.36
KBD1609	Dodge, Jeep, Mitsubishi	R-S	302	10	8	60	80	168	5	1	114.3	10.74
KBD1610	Toyota	F-V	275	22	19	46	55	130	4	2	100	11.98
KBD1611	Citroen, Peugeot	R-S	268	12	10	74.2	55.9	61.9	4	0	108	14.8
KBD1612	Honda	F-V	296	25	23	48	64	142	5	4	114	14.68
KBD1613	Honda	R-S	282	9	8	48.7	64	156.5	5	4	114.3	8.2
KBD1614	Honda	R-S	305	9	8	61	70	190	5	5	114	9.64
KBD1616	Honda	R-S	239	9	8	33	61	147.5	4	4	100	5.5
KBD1617	Iveco	R-S	296	16	13	69.5	76	157.6	6	1	125	15
KBD1620	Kia	R-V	315	20	18.4	87.5	96.4	190	5	3	139.6	17
KBD1621	Lexus	R-S	291	10	8.5	62	62	190	5	3	114.3	9.6
KBD1622	Mazda	R-V	302	18	16	43.5	72	142	5	1	114.3	11.26
KBD1623	Citroen, Peugeot	R-S	249	9	7	74.2	62	56	4	0	108	11.9
KBD1624	Porsche	R-V	299	24	22	67	98	180	5	4	130	12.6
KBD1627	Iveco	F-V	290	26	33	53	80	140	6	0	110	15.6
KBD1628	Iveco	R-S	306	22	20	136.5	178	190	6	0	215	28
KBD1629	Opel, Vauxhall	F-V	337	30	28	51	67	159.7	5	1	120	22.4
KBD1630	Opel, Vauxhall	R-V	315	23	21.5	48	67.4	171.8	5	1	120	16
KBD1631	Mazda	R-S	276	10	8	35	55	125	4	1	100	7.48
KBD1632	Hyundai	R-V	315	20	18.4	86.4	108	190	6	3	139.7	16.14
KBD1633	Mercedes	F-V	330	28	26	46.5	67	154	5	2	112	19.46
KBD1634	Toyota	F-V	254	22	20	50	55	130	5	2	100	9.32
KBD1635	Toyota	F-V	275	26	24	49.2	62	142.6	5	2	114.3	11.86
KBD1636	Toyota	R-S	259	9	7.5	30.5	62	154.6	5	2	114.3	6.38
KBD1637	Smart	F-S	280	9.6	8	38	58	153.5	3	1	112	8.24
KBD1638	Renault	F-V	296	26	23.4	44	68	147.75	5	2	114.3	15.44
KBD1639	Toyota	F-V	255	22	19	46	55	130	4	2	100	12.4
KBD1640	Renault	R-S	240	8	7	82.75	52.3	150.3	4	0	100	8.8
KBD1641	Citroen, Peugeot	R-S	249	9	8	69.1	55.9	61.9	4	0	108	10.2
KBD1642	Citroen, Peugeot	R-S	249	9	8	67.1	55.9	60.25	4	0	108	10.22
KBD1643	Renault	R-S	270	10	8	81	25	25	4	0	100	12.24
KBD1644	Renault	R-S	300	11	9.5	84.5	52.3	62	5	0	108	16.6
KBD1650	Jeep	R-S	285	12	11	59.5	72	184	5	0	114.3	11.14
KBD1651	Chevrolet, Opel, Vauxhall	F-V	276	26	23	45.5	60	139	5	1	105	14
KBD1652	Chevrolet, Opel, Vauxhall	R-S	268	12	10	46	60	147	5	1	105	13.8
KBD1653	Chevrolet, Opel, Vauxhall	F-V	300	26	24	46	71	149	5	1	115	17.1
KBD1654	Chevrolet, Opel, Vauxhall	R-S	292	12	10	46	71	157	5	1	115	10.68
KBD1665	Audi	F-V	345	30	28	46.3	68	142	5	1	112	23.92
KBD1666	Audi	R-V	300	22	20	36	68	134	5	1	120	12.4
KBD1667	Audi	R-V	358	28	26	74	85	210	5	2	130	19.2
KBD1668	Seat, Volkswagen	F-V	314	30	27	49.6	65	145	5	0	112	18.66
KBD1669	Renault	F-V	280	24	22	44	68	139.8	5	2	114.3	13.2
KBD1670	Mercedes	F-V	295	28	25.4	51.5	67	154.5	5	1	112	14.8
KBD1671	Hyundai	R-S	262	10	8.4	45	76	162	5	2	114.3	9.2
KBD1672	Opel, Vauxhall	F-V	321	30	27	45.6	70.7	160.1	5	1	115	19.4
KBD1675	Chevrolet	F-V	278	24	22	47.1	60	141	4	1	114.3	13.34
KBD1676	Chevrolet	R-S	276	12	10	58.2	60	168	4	2	114.3	10.52
KBD1677	Chrysler, Dodge	F-V	302	28	26	39	72.5	164	5	0	127	16.96
KBD1678	Chrysler	R-S	305	12	10	33	72.5	170.5	5	0	127	10.84
KBD1679	Daihatsu	F-V	254	22	20.5	42	55	137	4	2	100	10.6
KBD1680	Daihatsu, Subaru	F-V	246	17	16	41.9	55.1	137	4	2	100	8.04
KBD1681	Dodge	R-S	305	12	10.5	33	72.5	170.5	5	0	127	10.84
KBD1682	Dodge, Jeep	F-V	302	28	26	64	72.5		5	0	127	15.28
KBD1683	Dodge, Jeep	R-S	316	12	10	77	72	206	5	0	127	14.56
KBD1684	Honda	F-V	300	25	23	47.3	64	142	5	4	114.3	16.4
KBD1685	Honda	R-S	260	9	8	31.1	61	142.4	4	4	100	15.08
KBD1686	Hyundai	F-V	252	18	16	48.7	62.2	126	4	2	100	9.14
KBD1687	Hyundai	F-V	256	18	16	46.8	62.2	126	4	2	100	9.06
KBD1688	Hyundai	F-V	300	30	28.4	52.5	96.3	163	6	2	139.7	19.2
KBD1689	Hyundai	R-V	324	18	16.4	82.6	96.3	210	6	2	139.7	15.1
KBD1690	Jeep	F-V	328	30	28	53	72	176	5	0	127	21.36
KBD1691	Jeep	R-S	320	14	12.5	66.6	72	205	5	0	127	15.72
KBD1692	Jeep	F-V	302	28	26.4	55	72		5	0	127	14.72
KBD1693	Jeep	R-S	316	12	10.4	77	72	206	5	0	127	14.42
KBD1694	Hyundai, Kia	R-S	258	10	8.4	40.5	76	154	5	0	114.3	7.22
KBD1695	Lexus	R-V	310	18	16.5	67.3	62	188.8	5	3	114.4	12.68
KBD1696	Mazda	F-V	296	28	26	48.3	72	142.5	5	3	114.3	16.92
KBD1697	Mazda	F-V	320	28	26	48	72	143	5	3	114.3	19.18
KBD1698	Mazda	R-V	302	18	16	56.6	72	190	5	4	114.3	13.28
KBD1699	Mazda	F-V	320	25	23	48.6	72	148	5	0	114.3	18.5

KBD1700	Mazda	F-V	299	25	23	48.4	72	142.2	5	3	114.3	16.7
KBD1701	Mercedes	F-V	330	32.2	29.4	54.7	67	156.4	5	3	112	23.4
KBD1702	Mercedes	F-V	350	32.1	29.4	54.7	67	156.2	5	3	112	26.6
KBD1703	Mercedes	R-S	330	14	11.4	62.9	67	210	5	2	112	15.58
KBD1704	Mercedes	R-V	330	22	19	62.8	67	210	5	1	112	16.32
KBD1705	Mitsubishi, Smart	F-V	281	26	23.5	46.8	69	145.5	4	0	114.3	13.38
KBD1706	Mitsubishi	F-V	276	26	24.4	45.6	69	145.9	5	0	114.3	11.62
KBD1707	Ford	R-S	270	11	9	42.4	63.4	152.5	5	0	108	8.5
KBD1708	Mitsubishi	R-S	262	10	8.4	60.2	80	167	5	1	114.3	8.34
KBD1709	Citroen, Mitsubishi, Peugeot	R-S	302	10	8.4	58.6	80	190	5	3	114.3	11
KBD1710	Nissan	F-V	280	24	22	44	68	143.2	4	0	114.3	13.04
KBD1711	Nissan	R-S	291	9	7.6	62	68	172	4	1	114.3	9.6
KBD1712	Nissan, Suzuki	F-V	231	20	18	51.4	60	125.2	4	2	100	8.44
KBD1713	Citroen, Peugeot	F-V	302	26	24	34.2	66	133.6	4	2	108	14.88
KBD1714	Renault	F-V	257	22	20	43.8	61.1	125.3	4	2	100	11
KBD1715	Renault	F-V	280	24	21.8	44	61	139.8	5	2	108	13.56
KBD1716	Renault	R-S	274	11	9.5	90	30	30	5	0	108	13.14
KBD1717	Ssangyong	F-V	294	28	26	56.4	85	165	5	2	130	15.5
KBD1718	Ssangyong	R-S	299	10	9	67.7	85	190	5	2	130	11.98
KBD1719	Ssangyong	R-V	307	20	18.4	71	85	190	5	3	130	19.04
KBD1720	Ssangyong	F-V	300	28	25.4	68	85	162	5	2	130	16.88
KBD1721	Subaru	R-S	286	10	8.5	63.3	58	190	5	3	100	10.08
KBD1722	Suzuki	R-V	308	16	14	57	62		5	3	114	
KBD1723	Toyota	F-V	255	20	18	46.2	55	131	4	2	100	9.54
KBD1724	Toyota	R-S	259	9	7.5	30.3	55	156	4	2	100	6.44
KBD1725	Toyota	F-V	275	22	20	46.5	55	131.2	5	2	100	12.2
KBD1726	Toyota	R-S	259	9	7.5	40.8	59	156	5	2	100	8.2
KBD1727	Toyota	R-S	279	10	8.5	30.3	55	155.8	5	2	100	8.5
KBD1728	Toyota	F-V	295	26	24	49.3	62	141	5	2	114.3	16
KBD1729	Toyota	F-V	320	26	23	49.3	62	141	5	2	114.3	19.18
KBD1730	Toyota	R-S	297	11	9	58.3	62	180	5	3	114.3	11.02
KBD1731	Toyota	R-S	290	11	9	33.8	62	155.2	5	2	114.3	9
KBD1732	Toyota	F-V	255	28	26	58.6	62	141.3	5	2	114.3	12.02
KBD1733	Toyota	F-V	297	25	23	67.3	108	170	6	2	139.7	13.66
KBD1734	Toyota	F-V	318	28	26	67.2	108	172	6	2	139.7	15.32
KBD1736	Audi, Volkswagen	R-V	335	22	20	42.4	68	178	5	2	112	15.5
KBD1737	Opel, Vauxhall	R-S	264	10	8.5	40.5	70	137	5	1	110	7.1
KBD1738	Chevrolet, Daewoo	F-V	236	20	19	41	59	123	4	3	100	7.6
KBD1739	Alfa Romeo	F-V	330	28	26	39.7	70	151	5	5	110	19.52
KBD1741	Land Rover	F-V	360	30	27	81	79	164.5	5	1	120	23.98
KBD1742	Renault	F-V	320	28	26	44	68	147.6	5	2	114.3	19.04
KBD1743	Lexus, Toyota	F-V	255	25	24	49.5	55	131	5	2	100	10.52
KBD1744	Lexus, Toyota	R-S	259	9	8	30.4	55	155	5	2	100	6.42
KBD1745	Ford	F-V	278	25	23	48.5	63.5	140	5	0	108	14.92
KBD1746	Subaru	F-V	316	30	28	57	58	148.8	5	2	100	19.9
KBD1747	BMW	F-V	312	24	22.4	73.5	79	151.8	5	1	120	18.34
KBD1748	Iveco	R-V	306	28	25	132	178.2	190	6	0	215	26.18
KBD1749	Mercedes	F-S	276	18	15	60	67		5	1	112	
KBD1750	Volvo	R-S	302	12	10	70	63.6	146	5	1	108	13.02
KBD1751	Volvo	R-V	302	22	20	41	63.6	165	5	1	108	13.6
KBD1752	Volvo	F-V	336	28	26	52	63.6	152	5	1	108	22.54
KBD1753	Hyundai, Kia	F-V	300	28	26.4	47.4	69	141.5	5	2	114.3	16.68
KBD1754	Mercedes	R-V	300	22	19.4	57.1	67	164	5	1	112	14.06
KBD1755	Mercedes	F-V	322	32	30	64.5	67	154	5	1	112	22.06
KBD1756	Mercedes	F-V	322	32	29.4	64.3	67	154	5	1	112	21.2
KBD1757	Nissan, Renault	F-V	320	28	26	44	68	146	5	0	114.3	18.98
KBD1758	Suzuki	F-V	280	22	20	47	62	146	5	2	114.3	11.46
KBD1759	Suzuki	R-V	278	9	8	43.4	62	168.8	5	2	114.3	8.36
KBD1760	Volvo	F-V	328	30	28	52	63.6	140	5	1	108	24.5
KBD1761	Volvo	R-V	302	22	20	51	63.6	165	5	1	108	14.62
KBD1762	BMW	R-V	300	20	18.4	66	75	185	5	1	120	13.32
KBD1763	Alfa Romeo	R-S	251	10	9	40.7	59	128	4	4	98	6.86
KBD1764	Alfa Romeo	F-V	305	28	26	44.8	59	139	4	4	98	16.48
KBD1765	Iveco	F-V	301	30	27	59	83	133	9	0	111	20.44
KBD1766	Toyota	F-V	338	32	29	68.6	107.9	172	6	0	139.7	20
KBD1767	Volkswagen	F-V	303	28	26	56.9	76	165	5	0	120	17.42
KBD1768	Nissan, Renault, Vauxhall	F-V	302	28	26	69.9	90	160.5	5	1	130	18.56
KBD1769	Nissan, Renault, Vauxhall	R-S	305	12	10	71.5	85	167	5	1	130	13.04
KBD1770	Nissan, Renault, Vauxhall	R-S	305	12	10	71.5	91	167	5	1	130	13.44
KBD1771	Kia	R-S	275	10	9	61.5	76	168	5	3	114.3	9.2
KBD1772	Renault	R-S	300	11	10	81.5	30	30	5	0	114.3	16.02

KBD1773	Renault	R-S	274	11	9.5	86.2	30	30	5	0	114.3	15.18
KBD1774	Renault	R-S	260	8	7	86.3	25	25	5	0	114.3	12.32
KBD1775	Opel, Vauxhall	R-S	278	10	8	42	65.5	149	5	3	110	7.94
KBD1776	Suzuki	F-V	276	20	18	40	62	146.5	5	4	114.3	11.08
KBD1777	Renault	R-S	260	8	6	86.3	30	30	5	0	114.3	13
KBD1778	Renault	R-S	270	10	8	80.7	25	25	5	0	108	12.96
KBD1779	Renault	R-S	300	11	10	101.8	30	30	5	0	108	19.3
KBD1780	Renault	F-V	280	24	21.8	44	61	139.8	5	2	108	13.6
KBD1781	Renault	R-S	300	11	9.5	102.3	62.3	52.25	5	0	108	18.3
KBD1782	Renault	R-S	300	11	9.5	102.8	50	55.3	5	0	108	18.68
KBD1783	Renault	R-S	290	11	9.5	91.9	30	30	5	0	114	17.72
KBD1784	Ford	R-S	280	11	9	50.8	63.5	148	5	0	108	8.92
KBD1785	Vauxhall	F-V	305	28	26	45.8	59	127	5	5	98	15.5
KBD1786	Audi	F-V	320	30	28	53.8	68	149	5	1	112	20
KBD1787	Hyundai	R-S	284	10	8.4	24.9	76	155	5	2	114.3	7.54
KBD1788	Hyundai	F-V	320	28	26.4	49	69	145	5	2	114.3	9.41
KBD1789	Hyundai	R-S	300	10	8.4	24.7	76	155	5	2	114.3	9
KBD1790	Peugeot	F-V	304	28	26	48.1	71	133	5	3	108	18
KBD1791	Fiat	F-S	257	12	10.2	40.5	59	123	4	2	98	9.02
KBD1792	Seat, Skoda, Volkswagen	F-S	256	22	19	28.3	65	132	4	1	100	8.58
KBD1793	Audi, Seat, Skoda, Volkswagen	R-S	272	10	8	48.3	65	140.2	5	5	112	7.76
KBD1794	Suzuki	F-S	290	10	9	46	108	183	5	2	140	9.54
KBD1795	Ford	F-V	288	33	30	55.5	93	136	5	0	111.5	19.2
KBD1796	Ford	R-S	288	16	13	69	96	120	5	0	160	17.4
KBD1797	Nissan	F-V	280	24	22	44	68	144	5	0	114.3	12.96
KBD1798	Renault	R-S	238	8	7	74.7	52.39	49.1	4	0	100	8.8
KBD1799	Honda	F-V	320	32	30	47.2	64	151.5	5	4	114.3	9.92
KBD1800	Mitsubishi	F-V	332	28	26	56.2	94	171	6	2	139.7	18.58
KBD1801	Mitsubishi	R-S	332	18	16	74.4	90	210	6	3	139.7	15.52
KBD1802	Suzuki	F-V	256	22	20	40	60	136	4	4	100	9.24
KBD1803	Land Rover	R-V	365	20	17	75	79	210	5	0	120	21
KBD1804	Honda	R-S	260	9	8	31	64	142	5	4	114.3	6.4
KBD1803	Land Rover	R-V	365	20	17	72.3	79	210	5	2	120	21.04
KBD1805	Peugeot	R-S	290	12	10	44	71	136	5	2	108	10.4
KBD1806	Suzuki	R-S	259	9	8	43	62	147.5	4	0	100	7.16
KBD1807	Audi, Volkswagen	F-V	340	30	27	49.7	65	145	5	5	112	21.3
KBD1808	Renault	R-S	238	8	7	75	25	25	4	0	100	16
KBD1809	Kia	R-S	262	10	9.4	63.7	76	168	5	2	114.3	16.8
KBD1810	BMW	F-V	284	22	20.4	73	79	152	5	1	120	12.86
KBD1811	Jaguar	F-V	355	32	30	48.3	71	160.5	5	0	108	12.58
KBD1812	BMW	R-S	290	11	9.4	66	75	161	5	1	120	9.8
KBD1813	Mini (BMW)	F-V	316	22	20.4	45.2	64	148	4	1	100	15.16
KBD1815	BMW	F-V	300	22	20.4	73	79	152	5	1	120	14.98
KBD1816	BMW	R-V	300	20	18.4	66	75	161	5	1	120	12.6
KBD1817	Mitsubishi	F-V	276	26	24.4	35.8	69	145.9	5	4	114.3	11.62
KBD1819	Kia	R-V	315	20	18.4	78.5	96	190	5	5	139.7	15.8
KBD1820	Ford	F-V	336	28	26	52	63.5	152	5	0	108	23
KBD1821	Ford	F-V	278	23	21	44.5	63.3	135.5	4	0	108	13.22
KBD1822	Ford	F-V	302	32	30	61	96	164	6	3	139.7	21.4
KBD1823	Dacia, Renault	F-V	258	22	20	44	61	126.5	4	2	100	9.34
KBD1824	Vauxhall	F-V	300	26	23	45.5	63	149	5	1	105	16.1
KBD1825	BMW	F-V	330	24	22	66	75	172	5	1	120	16.4
KBD1826	BMW	R-V	330	20	18	69	75	185	5	1	120	14.6
KBD1827	BMW	F-V	328	28	26.4	73	75	153.8	5	1	120	20.7
KBD1828	BMW	R-V	330	20	18.4	71	75	153.7	5	1	120	14.88
KBD1830	Fiat	R-S	251	10	8	40.9	59	128	5	5	9	6.84
KBD1831	Fiat	F-V	284	22	20	42	59	127	5	0	98	12.8
KBD1832	Hyundai	F-V	280	23	21	44.4	69	143.4	5	2	114.3	12.6
KBD1833	Peugeot	F-V	302	26	24	34	66	133.5	5	3	108	15.28
KBD1834	Mini (BMW)	F-V	294	22	20.4	45	79	152	5	1	120	13.2
KBD1835	Mazda	F-V	297	28	26	52.5	68	143	5	1	114.3	16.2
KBD1836	Nissan, Renault, Vauxhall	R-S	302	18	15	51	120.1	164.8	8	0	140	15.4
KBD1837	Hyundai, Kia	R-S	302	11	9.4	71.5	69	190	5	2	114.3	11.8
KBD1838	Land Rover	F-V	344	30	27	76	79	164	5	1	120	24
KBD1839	Mercedes	R-S	274	11	9.5	88.2	62.3	108	5	0	108	15
KBD1840	BMW	R-V	300	20	18	76	75	160	5	1	120	13.2
KBD1841	BMW	R-V	300	20	18	76	75	185	5	1	120	13.6
KBD1842	Mini (BMW)	R-S	280	10	8.4	44	64	163	4	1	100	7.4
KBD1845	Nissan	F-V	256	26	24	54	68	144	4	0	114	12.4
KBD1846	Ford	F-V	308	33	30	55	93	136	5	0	111	23.2
KBD1847	Ford	R-S	308	16	13	25.8	122.5	200	5	0	150	

KBD1848	Chrysler	R-S	320	10	8.5	64.8	72.5	184	5	0	115	12.6
KBD1849	Chrysler	R-V	320	22	20	66.8	72.5	184	5	0	115	16.4
KBD1851	Subaru	R-V	316	20	18	61	58	190	5	2	114	15.6
KBD1852	Ford	F-V	300	28	26	51	63.5	140	5	1	108	17.4
KBD1853	Ford	R-S	302	11	9.5	51	63.5	177	5	0	108	10.2
KBD1854	Ford	F-V	308	31	28	61	93	135.5	5	0	113.5	21.8
KBD1855	Ford	R-S	308	18	16	22	122.5	180	6	0	148	
KBD1856	Ford	R-S	308	16	13	69	120	120	5	0	160	19.6
KBD1857	Ford, Volvo	F-V	320	25	23	48.8	63.5	148	5	0	108	18
KBD1858	Mini (BMW)	F-V	307	24	22	45	79	152	5	1	120	15.6
KBD1859	Skoda	R-S	300	12	10	48.3	65	173	5	5	112	10.2
KBD1860	Fiat	R-S	278	9	8	43.4	62	169	5	3	114	8
KBD1861	Mini (BMW)	R-S	280	10	8.5	50	79	152	5	1	120	8.4
KBD1862	Honda	F-V	293	25	23	47.3	64	143	5	4	114	15
KBD1863	Honda	R-S	276	10	8	32	43	143	5	4	114	7.2
KBD1865	Fiat, Renault, Vauxhall	F-V	296	28	26	44	68	149	5	2	114	18
KBD1866	Fiat, Renault, Vauxhall	R-S	280	12	10	104.5	35	68	5	0	114	19.2
KBD1867	Nissan	F-V	283	28	26	44	68	154	5	0	114	13.8
KBD1868	BMW, Mini (BMW)	F-V	307	24	22.4	45	67	151	5	1	112	15.8
KBD1869	BMW, Mini (BMW)	R-S	280	10	8.4	50.5	67	155	5	1	112	7.6
KBD1870	Ford	F-V	300	28	26	54.5	93	136	5	0	113.5	18
KBD1871	Peugeot	F-V	266	22	20	48	71	137	5	3	108	10.6
KBD1872	Peugeot	R-S	249	10	8	35	71	133	5	2	71	
KBD1873	Peugeot	F-V	283	26	24	48	71	134	5	3	108	13.4
KBD1874	Citroen, Peugeot	R-S	268	12	10	35	71	133	5	2	108	8.6
KBD1875	Vauxhall	R-V	315	23	20	45.5	71	172	5	1	115	
KBD1876	BMW	R-V	300	20	18.4	66	75	185	5	1	120	13
KBD1877	BMW	F-V	348	30	28	66	75	187	5	1	120	20.96
KBD1878	BMW	R-V	345	24	22	69	75	185	5	1	120	17.4
KBD1879	Toyota	F-V	277	26	24	49	62	142	5	2	114	13.6
KBD1882	BMW	F-V	348	36	34.5	66	75	154	5	1	120	24.4
KBD1883	Nissan	F-V	296	26	24	44	68	148	5	2	114	
KBD1884	Nissan	R-S	290	13	11	47	68	158	5	2	114	11.2
KBD1885	Mercedes	R-S	295	10	8.5	44	67	161	5	1	112	9.2
KBD1886	Volvo	F-V	278	25	23	48	64	140	5	0	108	13.2
KBD1887	Ford	R-S	284	16	14	44	107	148	10	0	124	12
KBD1888	Mercedes	R-S	276	9	8	44	67	153	5	1	112	7.2
KBD1889	Land Rover	R-S	302	11	9	64	63.5	186	5	2	108	10.4
KBD1892	Hyundai, Kia	F-V	280	22	19.4	45.5	62.3	100	4	2	100	11.8
KBD1893	Hyundai, Kia	F-V	256	22	19.4	44	62	126	4	2	100	9.4
KBD1894	Land Rover	F-V	380	34	32	81	79	165	5	0	120	30.4
KBD1895	Audi	F-V	347	30	28	59	68	158	5	1	112	22.2
KBD1896	Audi	R-V	330	22	20	49	68	138	5	1	112	
KBD1897	Mitsubishi	R-S	262	10	8.4	60	90	168	5	3	114	8.2
KBD1898	Ford	F-V	316	28	26	51	64	140	5	0	108	19.8
KBD1899	Ford	R-S	316	11	10	51	64	187	5	0	108	11.2
KBD1900	Honda	F-V	350	32	30	54.5	70	160	5	5	120	22.4
KBD1901	Honda	R-S	296	11	10	42	70	167	5	4	120	8.2
KBD1902	Alfa Romeo, Fiat, Jeep	F-V	281	26	24	40	70	138	5	0	110	13
KBD1903	Alfa Romeo	R-S	264	10	8	40.5	70	137	5	5	110	7.4
KBD1904	Mazda	R-S	278	10	8	39.5	68	143	5	0	114	8
KBD1905	Kia	R-S	262	10	8	44	62	162	4	0	100	7.6
KBD1906	Ford	F-V	278	25	23	40	40	136	4	0	108	13.2
KBD1907	Mazda	F-V	280	25	23	51.5	68	143	5	0	114	12.6
KBD1908	Mazda	F-V	295	25	3	51.5	68	143	5	0	114	14.6
KBD1909	Mazda	R-S	265	9	7	39	68	143	5	0	114	7
KBD1910	Peugeot	R-S	290	12	10.5	35	71	151	4	0	108	9.9
KBD1911	Kia	R-S	284	10	8.4	45	76	184	5	2	114	8
KBD1912	Nissan	F-V	320	28	26	44	68	154	5	0	114	20
KBD1913	Nissan	R-V	291.5	16	14	47	68	158	5	0	114	10.4
KBD1914	Vauxhall	F-V	300	26	23	45.5	60	149	5	1	105	17
KBD1915	Vauxhall	F-V	276	26	23	45.5	60	139	5	1	105	13
KBD1916	Vauxhall	R-S	288	12	10	45.5	60	155	5	1	105	10.4
KBD1917	Vauxhall	R-S	264	10	8	44	60	147	5	1	105	8
KBD1918	Vauxhall	F-V	236	20	18	41	60	125	4	1	100	7.8
KBD1919	Ford	F-V	300	28	26	51	63.5	140	5	1	108	17.4
KBD1920	Ford	F-V	316	32	30.5	52.5	63.5	108	5	1	108	21.5
KBD1921	Ford	R-S	316	11	9.5	51	63.5	114	5	1	108	11.2
KBD1922	Mini (BMW)	F-V	280	22	20	45	67	150.5	5	0	112	11.4
KBD1923	Citroen, Peugeot	F-V	304	28	26	54	71	137	5	0	108	18.8
KBD1924	Citroen, Peugeot	R-S	290	12	10	35	71	133	5	0	108	9.6

KBD1925	Citroen, Peugeot	R-V	294	22	20	35	71	140	5	0	108	12
KBD1926	Citroen, Fiat, Peugeot	F-V	280	24	22	67.5	73	118	5	5	118	15
KBD1931	Jaguar	F-V	316	28	26	48	63.5	150	5	0	108	19
KBD1932	Jaguar	R-S	300	10	8	42	63.5	146	5	0	108	10.4
KBD1933	Jaguar	F-V	325	30	28	48	63.5	158.5	5	1	108	20.6
KBD1934	Jaguar	R-V	325	20	18	42	63.5	160	5	0	108	14.8
KBD1935	Audi, Seat, Skoda, Volkswagen	F-V	276	24	21	50	65	144	5	4	112	13.2
KBD1936	Mini (BMW)	R-S	259	10	8.4	50.6	67	155	5	0	112	7
KBD1939	Volkswagen	F-V	308	29.5	27	55.6	76	155	5	0	120	20.4
KBD1940	Citroen	F-V	283	26	24	48	71	134	5	3	108	
KBD1941	Dacia	F-V	269	22.4	20	44	68	141	5	2	114	11
KBD1942	BMW, Mini (BMW)	F-V	294	22	20	45	67	151	5	0	112	12.8
KBD1943	BMW	F-V	348	36	34.4	77	79	154	5	0	120	25.6
KBD1944	Audi, Porsche	F-V	345	30	28	53.8	67.9	165	5	1	112	22.2
KBD1945	Mercedes	F-V	330	32	30	58.4	67	154	5	0	112	21
KBD1946	Mercedes	R-S	300	12	10	58	67	186	5	0	112	10.8
KBD1947	Jaguar, Land Rover	F-V	325	30	28	52	64	145	5	0	108	21.2
KBD1948	Land Rover	R-S	300	10	8	42	64	146	5	0	108	10.4
KBD1949	Land Rover	R-S	317	10	8	50.5	63.5	160	5	1	108	12
KBD1950	Citroen	R-S	302	10	8.4	36.2	69	144	5	0	114	9
KBD1951	Citroen, Fiat, Peugeot	F-V	280	28	26	71.5	73	142	5	5	118	17.2
KBD1952	Ford	F-V	350	25	23	48.8	63.5	147	5	0	108	21
KBD1953	Honda	F-V	315	28	26	47	64	160	5	4	114	17.8
KBD1954	Honda	R-S	305	11	9	43.6	70	156	5	3	120	9.8
KBD1955	Peugeot	F-V	340	30	28	34	70	133	5	0	108	20.8
KBD1956	BMW	F-V	280	20	18.4	44.8	67	151	5	5	112	10.4
KBD1957	Mercedes	F-V	304	30	27.4	47.5	67	154	5	0	112	19.8
KBD1958	Ford	R-S	302	11	10	41	63.5	186	5	0	108	9.8
KBD1959	Fiat, Mazda	F-V	280	22	20	44	55	124.5	4	1	100	12.4
KBD1960	Ford	F-V	262	23	21	43.7	63.6	136	4	0	108	12
KBD1961	Hyundai, Kia	F-V	305	25	23.5	46.8	69	145	5	2	114	16.4
KBD1962	Nissan	F-V	296	28	26	53	68	154	6	0	114	16.6
KBD1963	Fiat, Mazda	R-S	280	9.5	7.5	35.6	55	125	4	1	100	7.6
KBD1964	Lexus, Toyota	R-S	281	12	10.5	44	62	173	5	2	114	9.2
KBD1965	Renault	R-S	260	8	7	87	25	136	5	0	114	12.2
KBD1966	Mercedes	F-V	300	28	25	52	67	153	5	1	112	15.35
KBD1967	Mazda	R-S	255	9.5	8	35.6	55	125	4	1	100	6.6
KBD1968	BMW	F-V	340	30	28.5	73.2	79	154	5	1	120	20
KBD1969	Subaru, Toyota	R-V	290	18	16	64	58	190	5	3	100	12
KBD1970	Mazda	R-S	303	10	8	39	68	143	5	1	114	9.2
KBD1971	Toyota	F-V	299	28	26	50	62	155	5	2	114	16.8
KBD1972	Mercedes	F-V	305	28	25.4	62.5	69	155	5	0	110	15.4
KBD1973	Hyundai	R-S	234	10	8.5	44.9	62.5	142	4	0	100	6
KBD1974	Seat, Volkswagen	F-V	256	22	19	45.3	65	134	5	0	100	10.2
KBD1975	Seat, Volkswagen	F-V	276	24	21	46	65	136	5	0	100	13
KBD1976	Toyota	F-V	255	25	22	49.2	55	141	5	0	100	10.6
KBD1977	Mazda	F-V	297	28	26	51.5	68	143	5	1	114	17
KBD1979	Vauxhall	F-V	300	26	23	45.5	70	149	5	1	115	
KBD1981	Audi, Seat, Volkswagen	F-V	310	25	22	34.2	65	134	5	0	100	15.8
KBD1982	Audi	R-S	272	10	8	48.2	65	140	5	1	100	7.8
KBD1983	Vauxhall	R-S	288	12	10	45	70	156	5	1	115	10.2
KBD1984	Honda	F-V	293	25	23	47	64	148	5	3	114	
KBD1985	Honda	R-S	282	9	8	48.5	64	158	5	3	114.3	
KBD1986	Volkswagen	F-V	303	28	25	70.3	76	165	5	1	120	19
KBD1987	Volkswagen	R-V	300	22	19	51	76	70	5	1	120	14.8
KBD1988	Ford	R-S	288	16	13	68.8	96	96	5	0	160	16.4
KBD1989	Citroen, Fiat, Peugeot	F-V	300	32	30	73.5	73	161	5	5	130	20.2
KBD1990	BMW, Mini (BMW)	F-V	330	24	22.5	45	67	151.4	5	1	112	18.4
KBD1991	Hyundai	R-S	306	22	20	136.5	178	190	6	0	215	
KBD1992	Volvo	F-V	345	30	27.5	48	63.6	141	5	0	108	24
KBD1993	Volvo	R-V	320	20	17.5	43	63.6	141	5	0	108	14
KBD1994	Honda	F-V	280	25	23	47	64	142.2	5	4	114.3	13.4
KBD1995	Peugeot	F-V	330	30	28	48	71	138	5	3	108	19.2
KBD1996	Vauxhall	F-V	305	28	26	45	70	139	5	3	110	16
KBD1997	Hyundai	R-S	302	10	8	31.2	76	173.2	5	2	114.3	9.4
KBD1998	Suzuki	F-V	272	22	20	40	62	149.5	5	2	114	
KBD2001	Ford	F-S	221	10	9	42	72	131	4	1	108	5.8
KBD2002	Land Rover	F-V	360	30	27	62	79	175	5	0	120	23.8
KBD2003	Land Rover	R-V	365	25	22	48	79	189	5	0	120	20.6
KBD2004	Land Rover	F-V	380	34	32	62	79	165	5	0	120	29.6
KBD2005	Land Rover	R-V	350	25	23	49	79	174	5	0	120	18.6

KBD2006	Volvo	F-V	328	30	28	51.2	68	140	5	5	108	24.2
KBD2007	Dacia, Renault	F-V	280	24	21.8	44	61	140	4	0	100	13.4
KBD2008	Mercedes	R-S	300.0	12.0	10.3	48.7	69.0	167	5	0	112	9.4
KBD2009	Hyundai, Kia	R-S	284	10	8.4	26	76	155.2	5	2	114.3	8
KBD2010	Chevrolet	F-V	256	24	21	45	60	124.8	4	0	100	11.4
KBD2011	Volvo	R-S	280	11	9	41	63	160	5	0	108	9
KBD2014	Volkswagen	F-V	340	32	28.5	55	76	154.8	5	1	120	24.4
KBD2015	Mazda	F-V	258	22	20	44	55	124.8	4	1	100	10.2
KBD2016	Citroen, DS, Peugeot	F-V	323	28	26	34	66	146	4	2	108	18
KBD2017	Suzuki	F-V	280	22	20	47	62	146.3	5	3	114	10.74
KBD2018	Suzuki	R-S	259	9	8	43	62	147.5	5	2	114	
KBD2020	Mercedes	F-V	295	24	21.4	62.8	69	154.8	5	0	112	13.2
KBD2023	Isuzu	F-V	300	27	25	40	88	196.5	6	0	109	16.3
KBD2024	Audi	F-V	318	30	28	57	68	149.3	5	1	112	19.8
KBD2025	Skoda	R-S	253	10	8	61.4	65	140.1	5	5	112	7.2
KBD2026	Audi, Skoda, Volkswagen	R-S	272	10	8	58	65	140	5	5	112	8.2
KBD2028	Ford	F-S	270	14.5	12.5	71	78.5	115	5	0	100	13.28
KBD2032	Volvo	F-V	324	28	26	52	63.5	140	5	1	108	21.2
KBD2034	Renault	F-V	296	26	24	44	68	147.7	5	2	114.3	15
KBD2035	Renault	R-S	290	11	9.5	90	30	142	5	0	114.3	15.8
KBD2036	BMW	F-V	338	26	24	73	79	171.5	5	1	120	19.8
KBD2038	Toyota	F-V	280	22	20	46	55	131	4	2	100	11.6
KBD2050	Audi, Porsche	R-S	330	22	20	36.2	68	147.7	5	0	112	15
KBD2051	Hyundai, Kia	R-S	284	10	8.5	32	76	155	5	2	114.3	8.6
KBD2074	Mercedes	R-S	279	9.9	8.3	71.5	67	162	5	2	112	9.24
KBD2076	Mercedes	F-S	284	12	10	46.5	67	153	5	3	112	10.34
KBD2133	Fiat, Lancia	F-S	257	12	10.8	52	62	135	4	2	98	9.92
KBD2147	Citroen	F-S	244	7	6.3	47	86	129	3	3	108	5.54
KBD2152	Porsche	R-V	289	20	18.7	71	103	180	5	5	130	12.16
KBD2193	Renault	F-V	278	24	22.6	70	95	149	6	0	120	14.98
KBD2213	Daihatsu	F-S	234	11	10	47	56	128	4	3	100	7.14
KBD2254	Subaru	F-S	212	10	9	28.5	65	99	4	0	94	5.18
KBD2324	BMW	F-V	302	28	26.4	76	79	148	5	2	120	17.22
KBD2339	Nissan	F-S	234	12	10	45	59	130	4	0	100	7.48
KBD2340	Nissan	F-V	260	26	24	37	81	140	6	0	103	12.6
KBD2353	Honda	F-V	231	19	17	49	61	128	4	4	100	8
KBD2354	Honda	R-S	239	10	8	72	46	56	4	0	100	8.4
KBD2374	Toyota	F-V	255	25	24	46	54	131	5	3	104	10
KBD2403	Mercedes	R-S	278	9	7.8	59	67	164	5	2	112	8.56
KBD2404	Mercedes	F-V	320	30	27.4	82	67	154	5	3	112	24.14
KBD2424	Renault	R-S	253	12	11	54	66	134	4	2	100	8.4
KBD2438	Fiat	F-V	243	20	18	68.7	52.3	118	4	0	98	9.82
KBD2444	Opel, Vauxhall	R-S	260	10	8	69	57	160	4	2	100	8.34
KBD2453	Alfa, Citroen, Fiat, Lancia, Peugeot	F-V	257	22	20.2	40	59	128	4	2	98	10.92
KBD2474	Toyota	R-S	269	10	9	64	54	170	5	3	100	9.54
KBD2480	Renault	R-S	255	10.5	9.5	30.5	66	134	5	2	108	6.4
KBD2482	Jeep	F-V	280	22	20.7	77	72	148	5	0	114	13.98
KBD2483	Renault	R-S	254	12	10.5	54	66	134	5	4	108	8.26
KBD2542	Subaru	R-V	266	18	16	67	58	129	5	2	100	11.06
KBD2543	Suzuki	F-S	212	9	7.5	42.5	60	126	4	1	100	4.52
KBD2565	Lexus	F-V	275	28	26	51	60	143	5	12	114.3	14.96
KBD2583	Volvo	F-V	256	22	20	40	60	149	4	3	100	9.4
KBD2599	Opel, Vauxhall	F-V	286	24	21	58.5	70	139	5	1	110	14.46
KBD2743	Citroen, Fiat, Lancia, Peugeot	F-V	281	26	24.2	43.5	59	127	5	1	98	14.68
KBD2754	Toyota	R-V	312	18	16	68	106	210	6	8	139.5	12.68
KBD2800	Peugeot	R-S	290	10	8	60	71	185	4	3	108	10.88
KBD2809	Land Rover	F-V	297	25	22	64	70	161	5	1	120	16.6
KBD2810	Land Rover	R-S	304	12.6	11.7	62	70	161	5	1	120	14
KBD2992	Mercedes, Volkswagen	R-V	285	22	19	93.3	120	169	6	0	145	15.22
KBD3009	Lexus	F-V	334	30	28	51	62	143.5	5	0	114.3	23.16
KBD3010	Fiat	F-V	305	28	26	44.8	60	139	4	4	100	16.88
KBD3011	Vauxhall	F-V	343	28	26	45.5	70	142.4	5	2	110	24.32
KBD3014	Mercedes	F-V	350	32	30	64.5	67	154	5	1	112	25.36
KBD3015	Audi	F-V	345	30	28	59.5	68	158	5	5	112	23.7
KBD3016	Volvo	F-V	330	32	30	50.3	68		5	0	108	20.1
KBD3018	Porsche	R-V	330	28	26	75	98	180	5	0	130	18.4
KBD3029	Volvo	R-V	330	28	26	65	68	172	5	0	108	18.6
KBD3032	Mazda	R-V	325	18	16	56.8	72	190	5	3	114.3	15.8
KBD3035	Audi	R-V	330	22	20	41.5	68	146	5	1	112	15
KBD3036	Citroen, Peugeot	F-V	340	30	28	30.3	71	136	5	0	108	21
KBD3037	BMW	R-V	345	24	22.4	74	79	185	5	1	120	20

KBD3041	Porsche	F-V	330	34	32	69.5	98	173.5	5	0	130	21.8
KBD3043	Jaguar	R-V	376	26	24	42	64.5		5	0	108	22.6
KBD3048	Porsche	R-V	299	20	18	67	98	180	5	0	130	11.2
KBD3052	Chrysler	F-V	330	28	26	38	72.5	164.7	5	0	127	19.2
KBD3053	Toyota	R-V	312	18	16	68	108.1	210.1	6	0	139.7	12.6
KBD3054	Renault	F-V	340	28	26	63	68	162	5	0	114.3	19.2
KBD3055	Renault	R-S	290	11	10	104.5	30	148	5	0	114	17.8
KBD3057	Nissan	F-V	355	32	30	49.2	68		5	0	114	
KBD3058	Nissan	R-V	350	20	18	62	68	172	5	0	114	17.8
KBD3060	Jaguar	F-V	380	36	34	48	71	200	5	0	108	35.4
KBD3063	Mercedes	F-V	320	30	28	51	67	112	5	0	112	18.8
KBD3065	Lexus	F-V	315	30	28	50	62		5	2	114	
KBD3066	Lexus	R-V	310	16	14	67	62		5	0	114	
KBD3067	BMW	R-V	345	24	22	66	75	185	5	0	120	17.6
KBD3069	Volkswagen	F-V	360	36	34	68.5	85.1	160	5	0	130	27.4
KBD3075	Peugeot	R-S	290	12	10	50	71	108	5	2	108	10.3
KBD3077	Lexus	R-S	290	10	8.5	61.3	62	190	5	0	114.3	9.8
KBD3078	Jaguar	F-V	365	32	30	72	71		5	0	108	
KBD3079	Chrysler, Mercedes	F-V	330	32	30	46.5	67	154	5	0	112	23.6
KBD3080	Lexus	R-V	290	18	16	67.3	62		5	2		
KBD3081	Vauxhall	F-V	330	28	26	45	70	150	5	0	110	20.8
KBD3083	Nissan	F-V	296	26	24	44.1	68.1	146	5	0	114.3	15.2
KBD3084	Subaru	R-V	278	18	16	63	58	170	5	0	100	
KBD3085	Subaru	R-S	274	10	9	61.8	58	170	5	0	100	9.2
KBD3086	Toyota	F-V	328	28	26	50	62	142.5	5	0	114.3	19
KBD3088	BMW	R-V	330	20	18	66.2	75	185	5	0	120	16.2
KBD3089	BMW	F-V	370	30	28	73	79	184	5	0	120	
KBD3090	Renault	R-V	300	24	22	37	61		5	0	108	
KBD3092	Mitsubishi	F-V	350	32	30	43.5	69	161	5	0	114.3	21.8
KBD3093	Mercedes	R-V	320	24	22	58	67	180	5	1	112	16.4
KBD3097	Land Rover	R-V	365	20	17	59	79	120	5	0	120	20
KBD3100	Mini (BMW)	F-V	335	30	28	45.1	67	150.8	5	1	112	21.8
KBD3102	Mitsubishi	R-V	330	22	20	58.2	80	190	5	3	114.3	16.8
KBD3103	Audi	F-V	356	34	31.5	53.9	67.9	149	5	1	112	27.4
KBD3104	Mercedes	F-V	344	32	30	65	67	154.3	5	1	112	25.2
KBD3107	Audi	R-V	356	22	20	36	68	160	5	0	112	16.8
KBD3110	Audi, Volkswagen	F-V	350	34	32	57	68	151.3	5	0	112	13.2
KBD3111	Volvo	F-V	366	30	28	48	63.5	141	5	1	108	26
KBD3112	Hyundai	R-S	302	10	8	55	76	190	5	3	114.3	
KBD3113	Ford	F-V	282	25	23	50	64	140	5	0	108	13.6
KBD3114	Ford	R-S	271	11	10	41	64		5	0	108	
KBD3116	Jaguar	F-V	350	32	30	48.2	63.5	158.5	5	0	108	25.4
KBD3117	Ford	F-V	300	28	26	51	64	140	5	0	108	17.4
KBD3118	Ford	R-S	302	11	10	51	63.5	177	5	0	108	10.2
KBD3119	BMW	F-V	348	36	34	81	79	154	5	1	120	27
KBD3120	Audi	F-V	356	34	32	63	68	149.5	5	1	112	27.2
KBD3121	Jeep	F-V	332	28	26	55	72	165	5	0	127	19
KBD3122	Jeep	F-V	280	24	22	77	72	162	5	0	114	13.6
KBD3124	BMW, Honda	F-V	348	36	34.4	66	67	153.7	5	1	112	
KBD3125	BMW	R-V	345	24	22	64.2	67	171.8	5	1	112	16.8
KBD3126	Honda	R-S	282	10	9	36.5	64	140	5	3	114.3	7.6
KBD3127	Volvo	F-V	322	28	26	48	63.5	141	5	0	108	19.6
KBD3128	Audi	F-V	338	30	28	57	68	149.3	5	1	112	22
KBD3129	Chrysler	R-S	328	12	10	33	72.5	166.5	5	0	127	12.6
KBD3130	BMW	R-V	300	20	18	54	75	174	5	0	120	12.6
KBD3131	Mercedes	R-V	345	22	20	54	67	189	5	1	112	16.4
KBD3132	Mercedes	F-V	375	32	30	55	67	156.3	5	3	112	32
KBD3133	Mercedes	R-V	300	22	20	52	69	167.7	5	0	112	12